

Mackenzie DataStream

An open access hub for sharing water data



Water Management in Alberta's Boreal
February 25, 2025



Mary Kruk
DataStream Data Specialist
The Gordon Foundation

An aerial photograph of a river with a large, forested island in the center. The river is dark blue, and the surrounding forest is a vibrant green. The island is also covered in dense green trees.

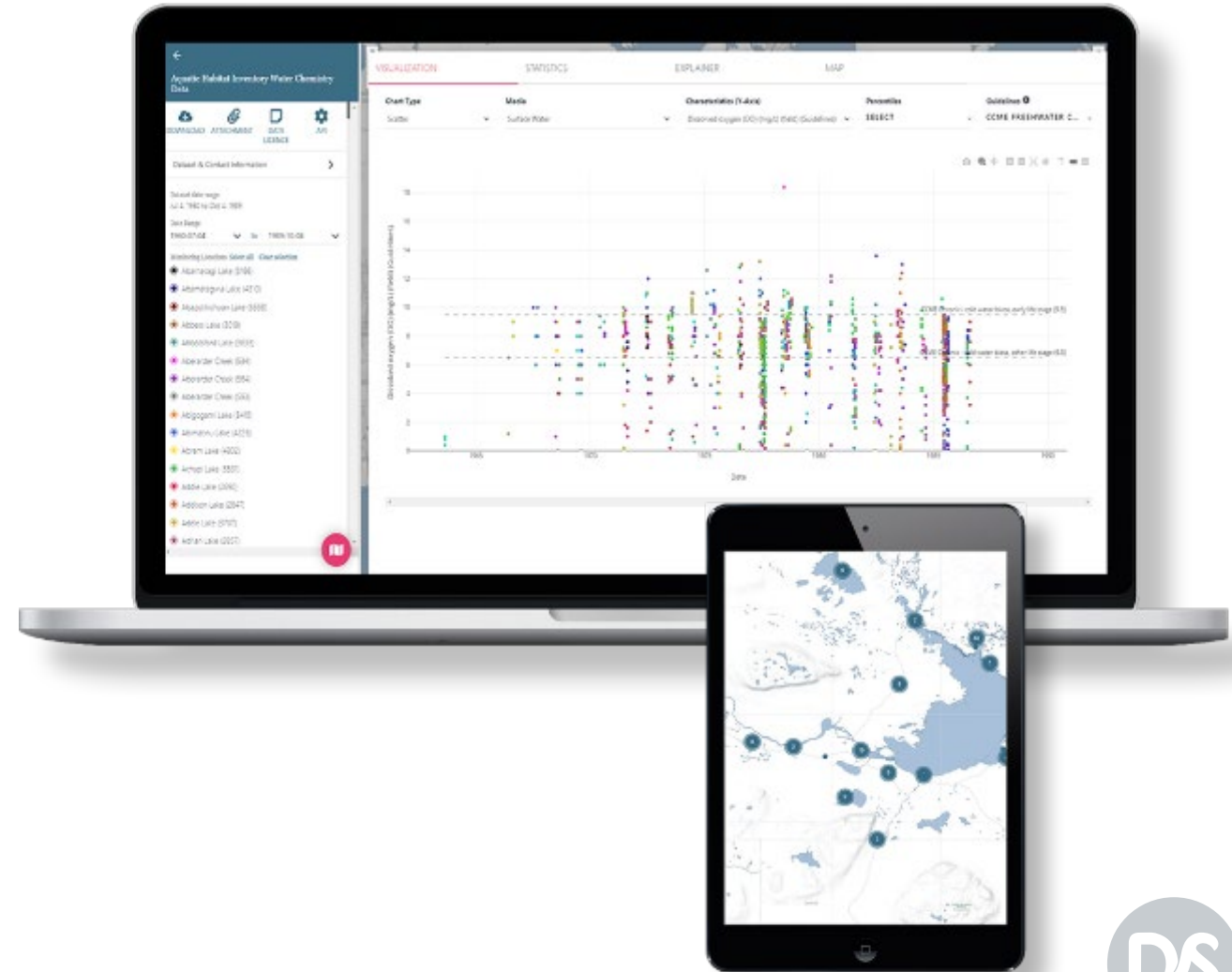
Today's session

- DataStream 101
- Standardizing water quality data
- Live demo
- Data use cases
- Q&A

DataStream

www.DataStream.org

- Open access site for **water quality data**
- Free and open for anyone to use
- Minimizes barriers to accessing/sharing data
- Fosters connections and collaboration



What we do

We work collaboratively across sectors and jurisdictions to imagine – and build – better ways to care for our waters



Open Data Platform

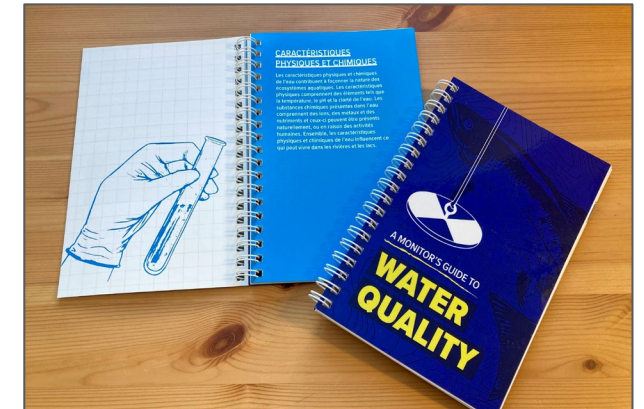
DataStream's free and open data platform provides a place to share and access water quality data



Photo credit: Pacific Salmon Foundation

Community Building

DataStream convenes across sectors and watersheds, and amplifies community science so that it can be used in decision-making at all levels



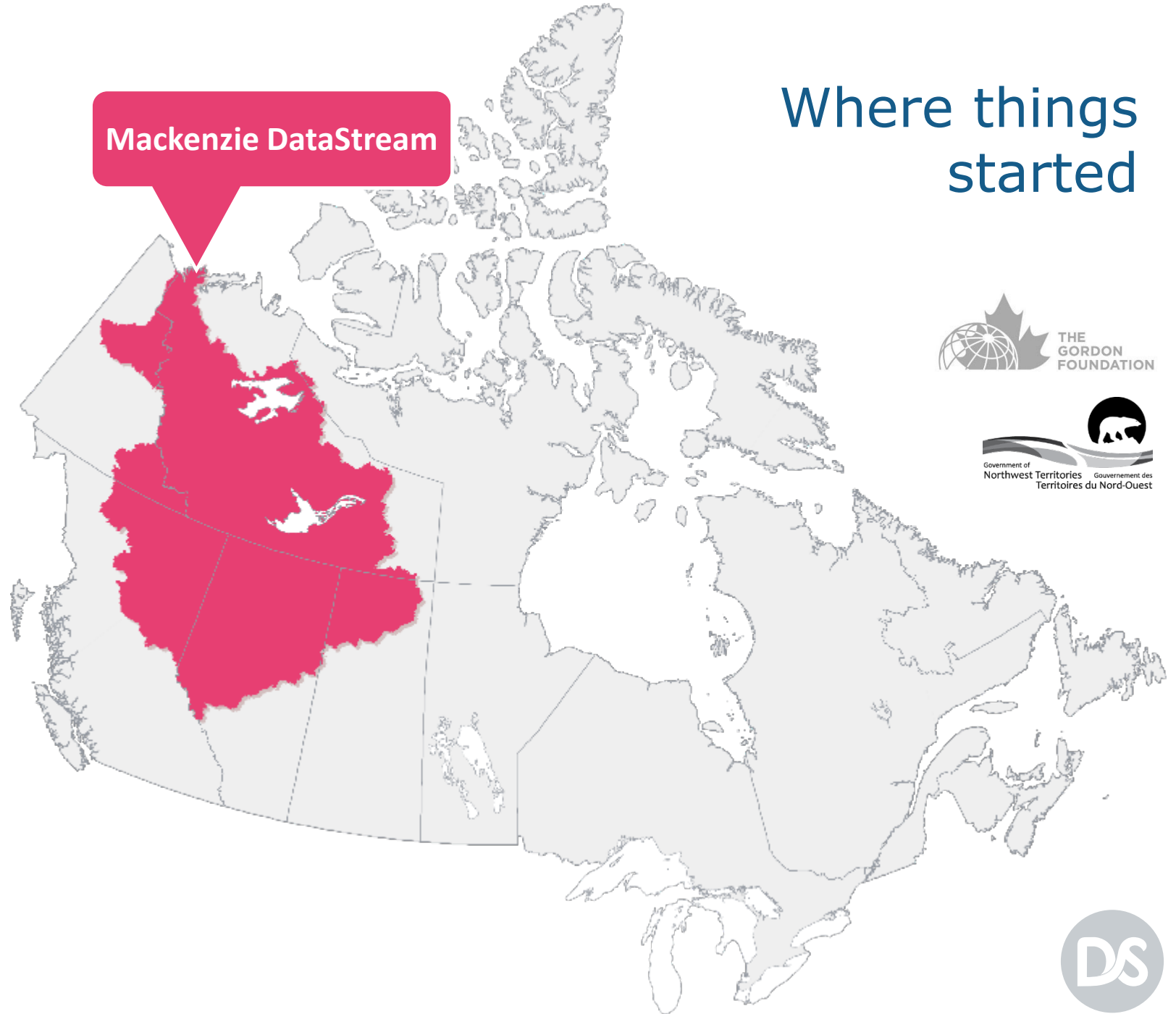
Education & Training

DataStream fosters knowledge sharing and the adoption of best practices for managing and sharing data





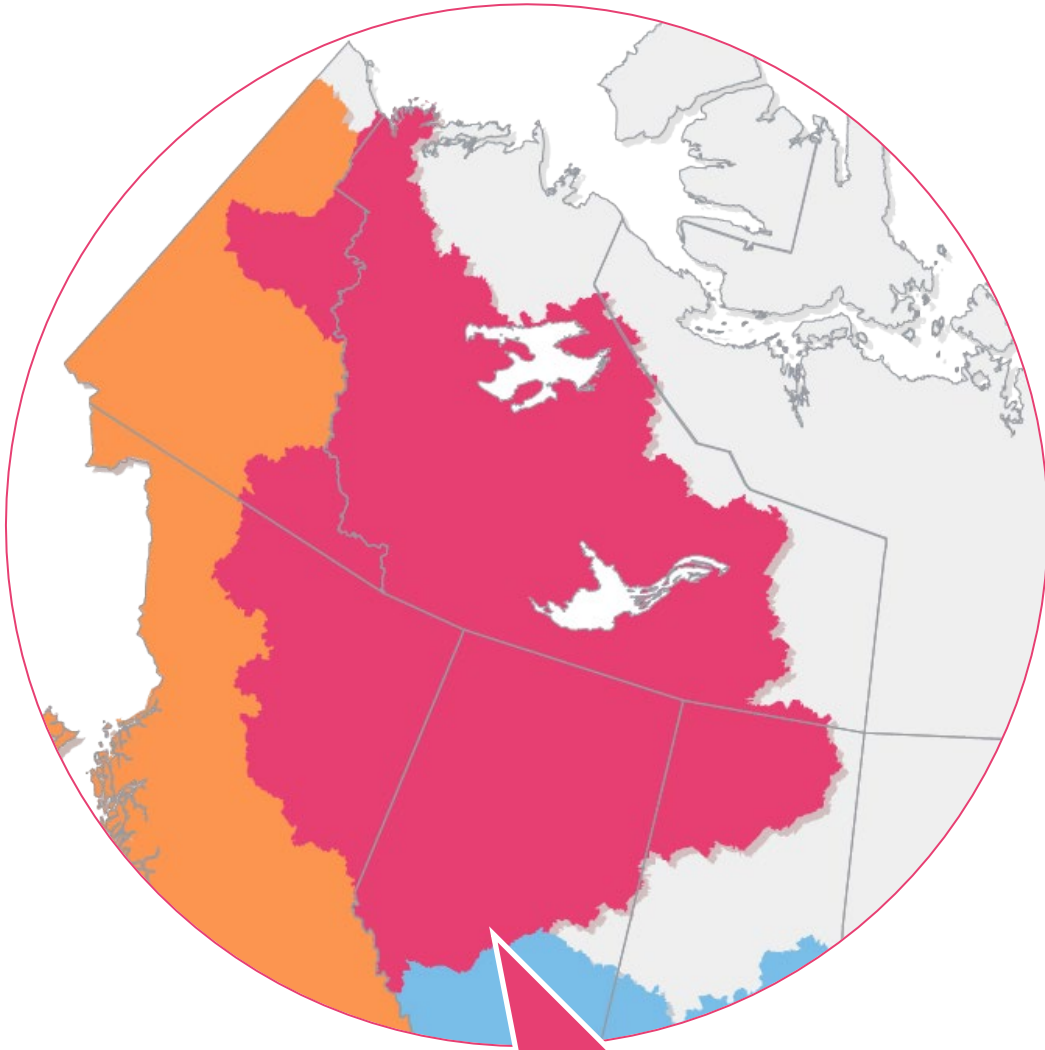
Mackenzie DataStream



Where things
started



DS

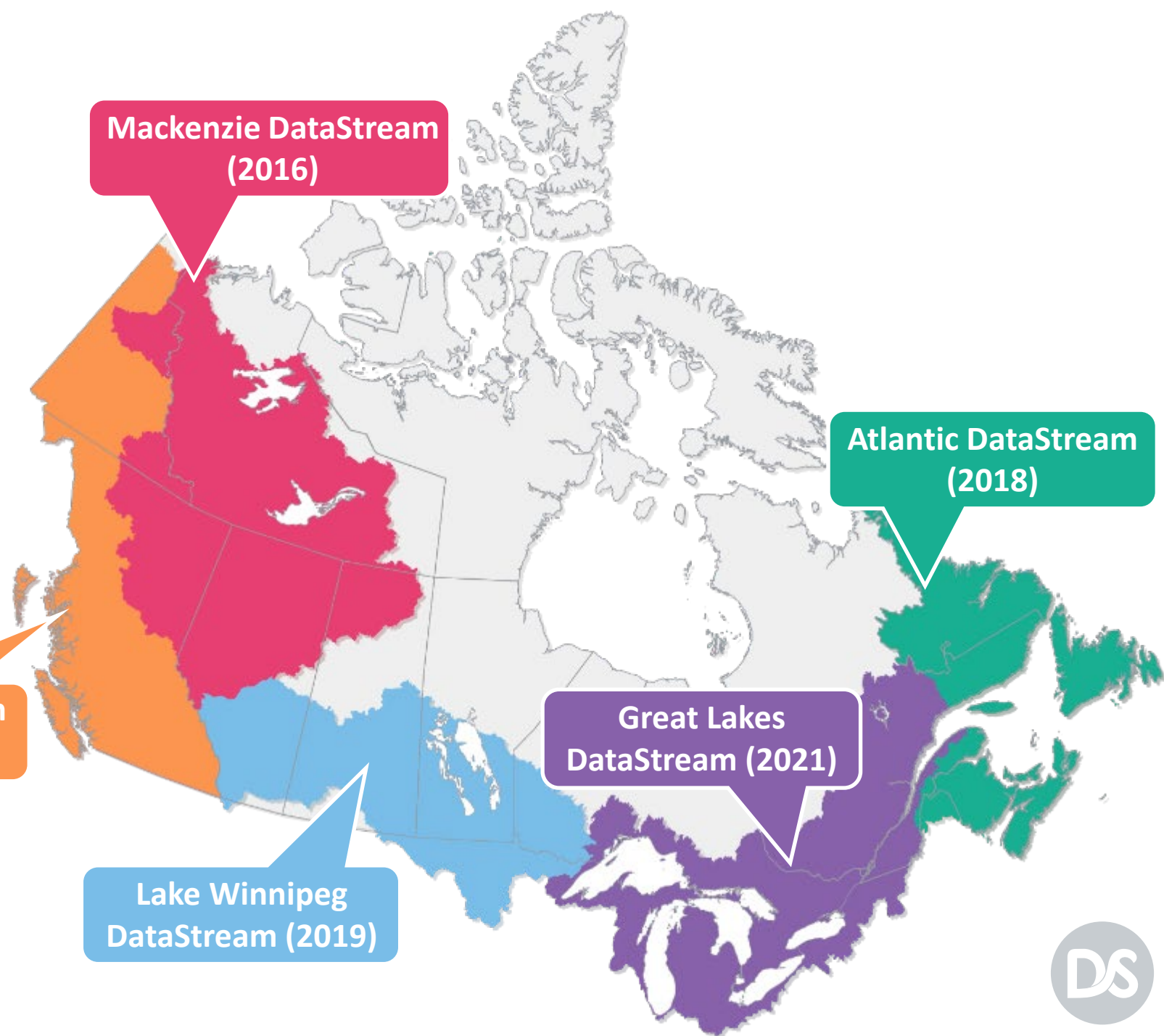


Mackenzie
DataStream (2016)

- Over 50 datasets shared
- Data from over 70 collection organizations
- Nearly 30% of organizations are Indigenous-led

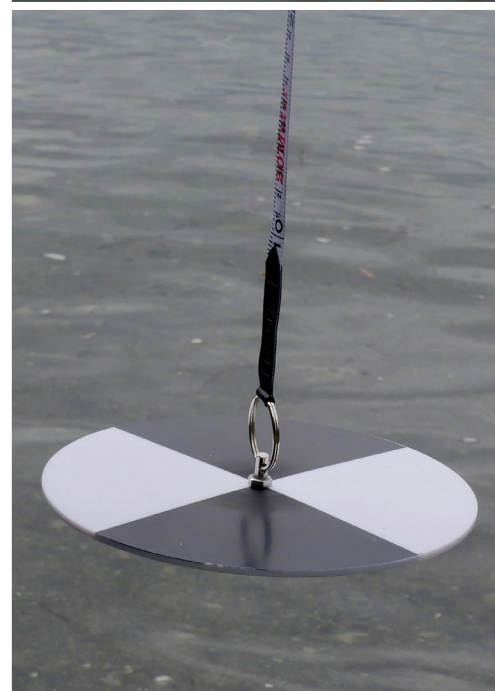
DataStream

DataStream was developed by The Gordon Foundation and is delivered in collaboration with regional monitoring networks.



What kind of data is on DataStream?

- Water quality data collected across watersheds
- Lab Data: Nutrients, metals, isotopes, etc.
- Field Data: pH, temperature, DO, etc.
- Media Types:
 - Surface water
 - Sediment
 - Groundwater (in development)



Who is sharing data on DataStream?

- Watershed organizations
- Academics
- Indigenous governments and orgs
- Provincial/Territorial Governments
- Federal Government



Data contributors maintain ownership of their data

Motivations for collecting and sharing data on DataStream



- Keep community members involved and informed
- Educational opportunities
- Community building – deepening connections with the water
- Fish health/habitat monitoring
- Establishing baselines - published data can be used to convince funders to provide restoration support
- Guiding restoration activities



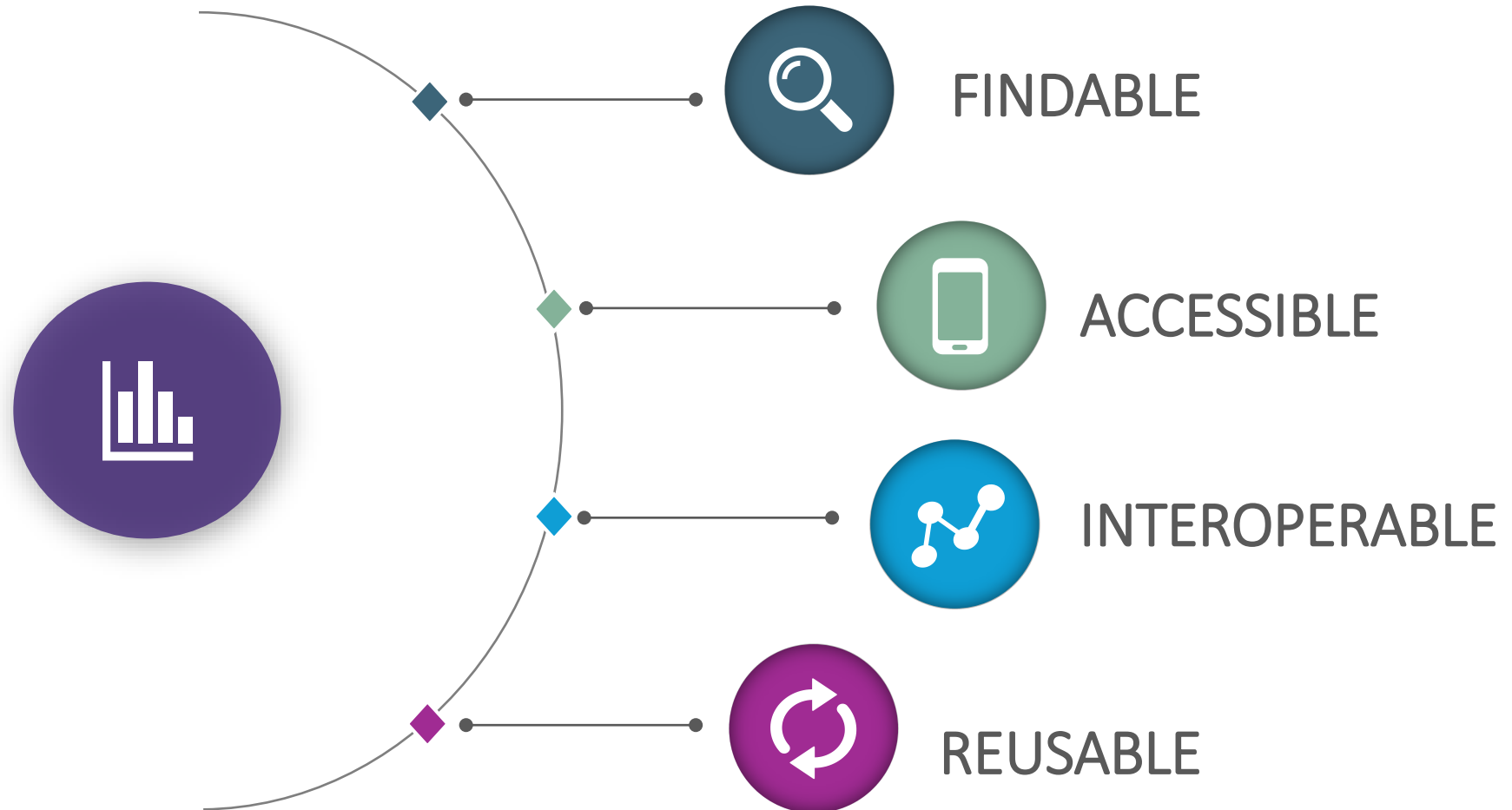
NWT Cumulative Impacts Monitoring Program (CIMP)

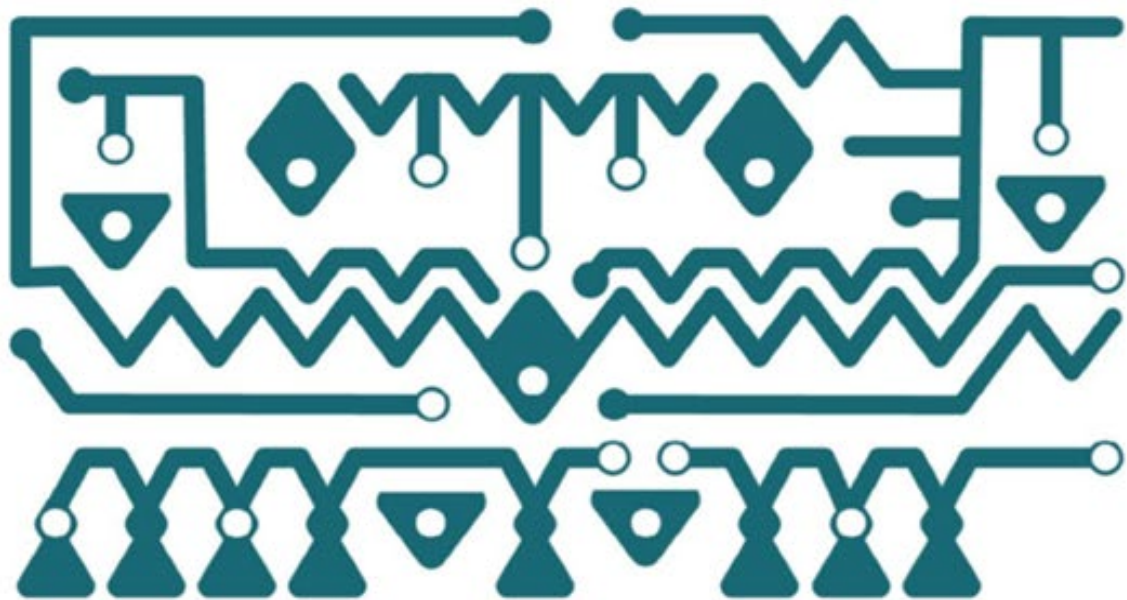




Standardizing water quality data

FAIR Principles for Scientific Data Management





CARE Principles for Indigenous Data Governance

C A R E

Collective
Benefit

Authority
to Control

Responsibility

Ethics



Structured datasets are useful datasets



Location Fields


Sample Fields


Result and Analysis Fields

Dataset level metadata

DATASET

LSWC tributary monitoring program

 Map and Visualize

 Download (CSV)

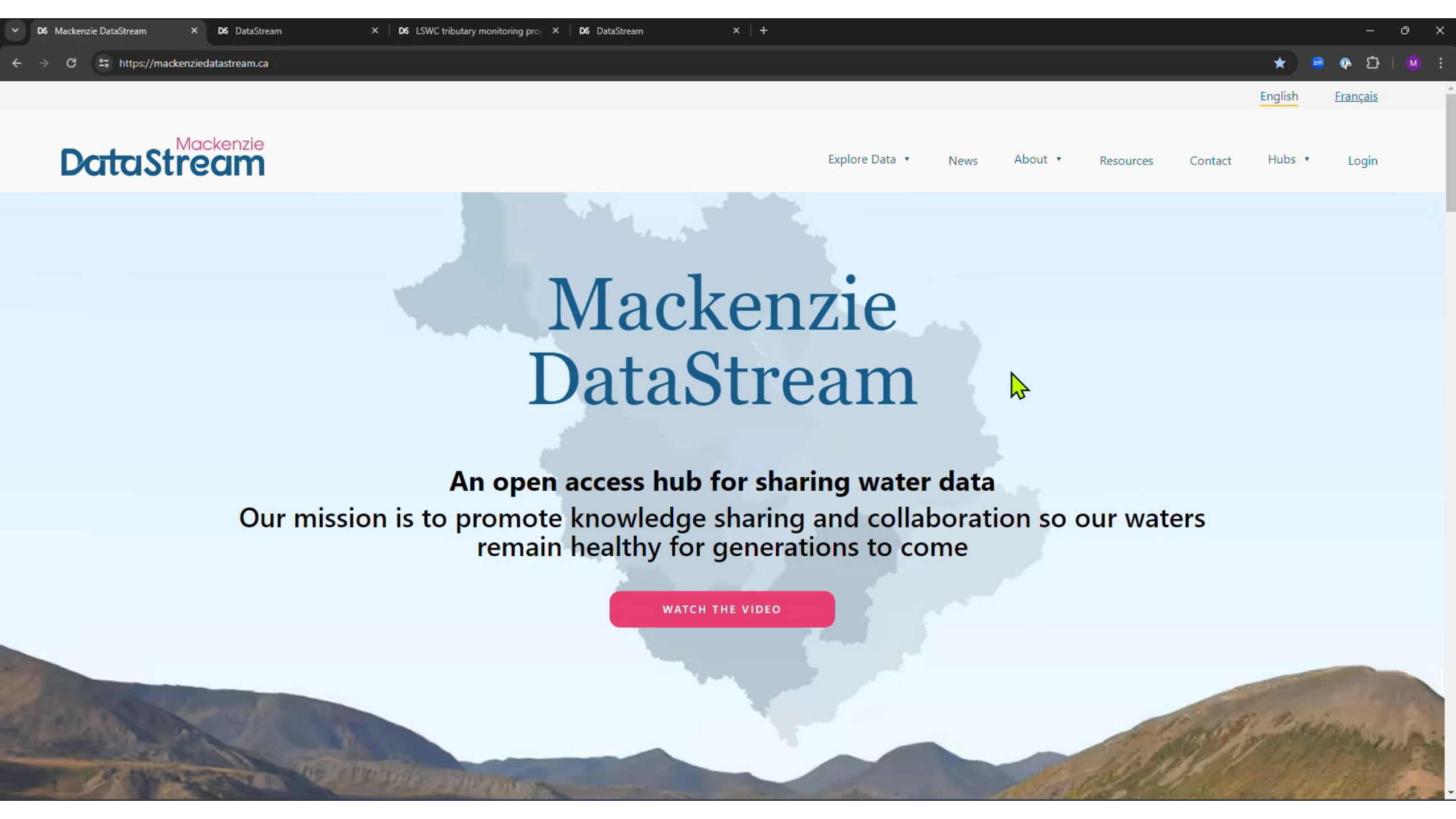
The Lesser Slave Watershed Council Tributary Monitoring Program collects water quality data for the five major tributaries of Lesser Slave Lake at upstream, mid and downstream locations. There is no government led monitoring being done in the Lesser Slave Watershed. Stakeholders and local government support this program financially so that we can collect valuable water quality information that will inform watershed management planning and decisions in the future. Water quality data is collected with portable water quality sensors and via grab samples that are sent for laboratory analysis.

Version	5.0.0
DOI	https://doi.org/10.25976/t1je-t809
Data Steward Email	meghanpayne@lswc.ca
Data Collection Organization	Lesser Slave Watershed Council
Data Upload	Lesser Slave Watershed Council



DataStream Demo





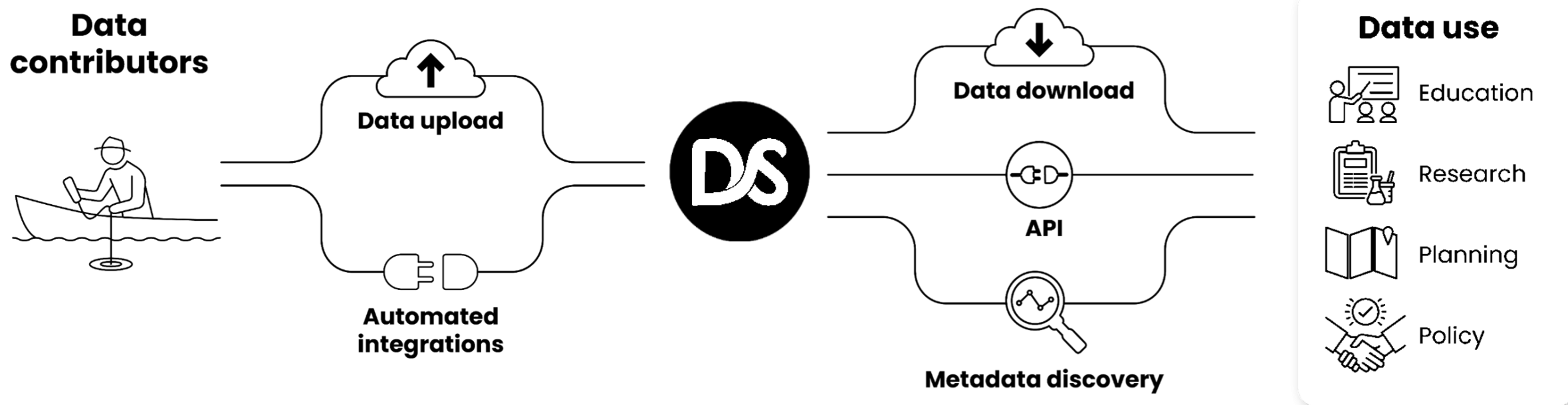
Mackenzie DataStream

An open access hub for sharing water data

Our mission is to promote knowledge sharing and collaboration so our waters remain healthy for generations to come

[WATCH THE VIDEO](#)

How it works



DataStream Upload Template

H3

✕

✓

fx

None

	A	D	E	F	G	H	I	J
1	CharacteristicID	SampleCollectionEquipmentName	CharacteristicName	MethodSpeciation	ResultSampleFraction	ResultUnit	ResultValueType	ResultDetectionQuantitationLimitM
3	chr1		pH			None		
4						mmol/L		
5						Mole/l		
6						MPN		
7						MPN/100ml		
8						MPN/g		
9						mS/cm		
10						mV		
11						m-1		
12						ng		
13						ng/g		
14						ng/l		
15						None		
16								
17								
18								
19								
20								
21								
22								
23								
24								
25								
26								
27								
28								
29								
30								
31								
32								
33								
34								
35								
36								

<

>

...

Licence

Allowed Values

Glossary

Dataset Metadata

Monitoring Locations

Characteristic Metadata

Results

Export

Tips & Tric

...

+

:

◀



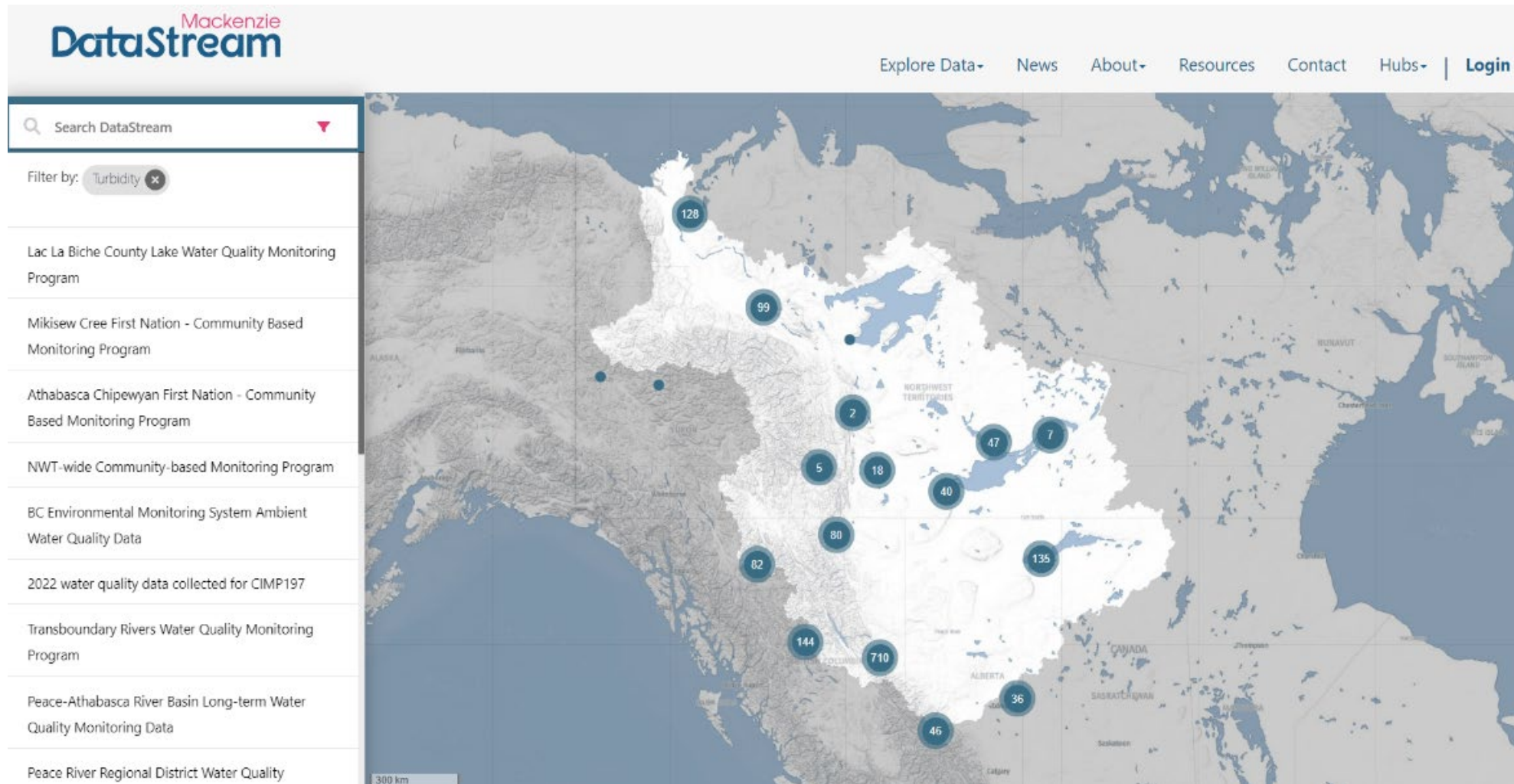
DataStream Use Cases



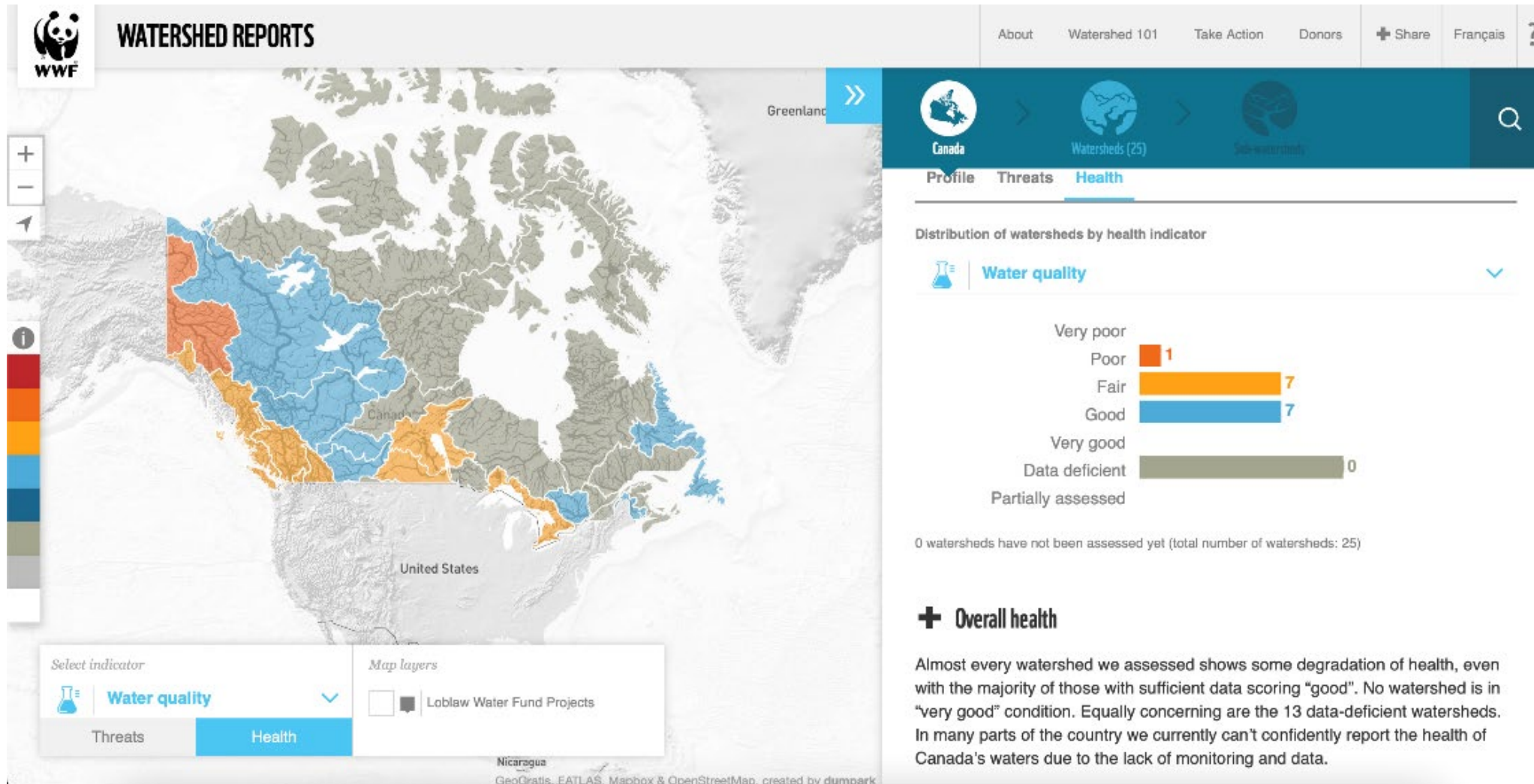
Northwest Territories-wide Community-based Water Monitoring



Pipeline Installation and Repair in the Northwest Territories



WWF Watershed Health Assessment Reports



Open data is a team sport, collaboration is key!

Regional Partners



Collaborators & Supporters



The Chawkers Foundation



John and Pat McCutcheon
Charitable Foundation



Environment and
Climate Change Canada

Environnement et
Changement climatique Canada





Thank You!

Mary Kruk

Data Specialist

mary@datastream.org

www.MackenzieDataStream.ca



@DataStreamH2O



@DataStreamH2O



@DataStreamInitiative



Sign up for our newsletter

