



County of
Grande Prairie No. 1

Water Supplies for Wildland Urban Interface Fires



Objectives

- **Define Wildland Urban Interface**
- **What are the types of Fire Department water supplies**
- **The needs for water in WUI fires**
- **Dunes West – Review of water operations**
- **Spring 2024 – What to expect**

Wildland Urban Interface (WUI)

What is it?



- a zone of transition between wilderness (unoccupied land) and land developed by human activity – an area where a built environment meets or intermingles with a natural environment.

What is a water supply

For fire fighting operations

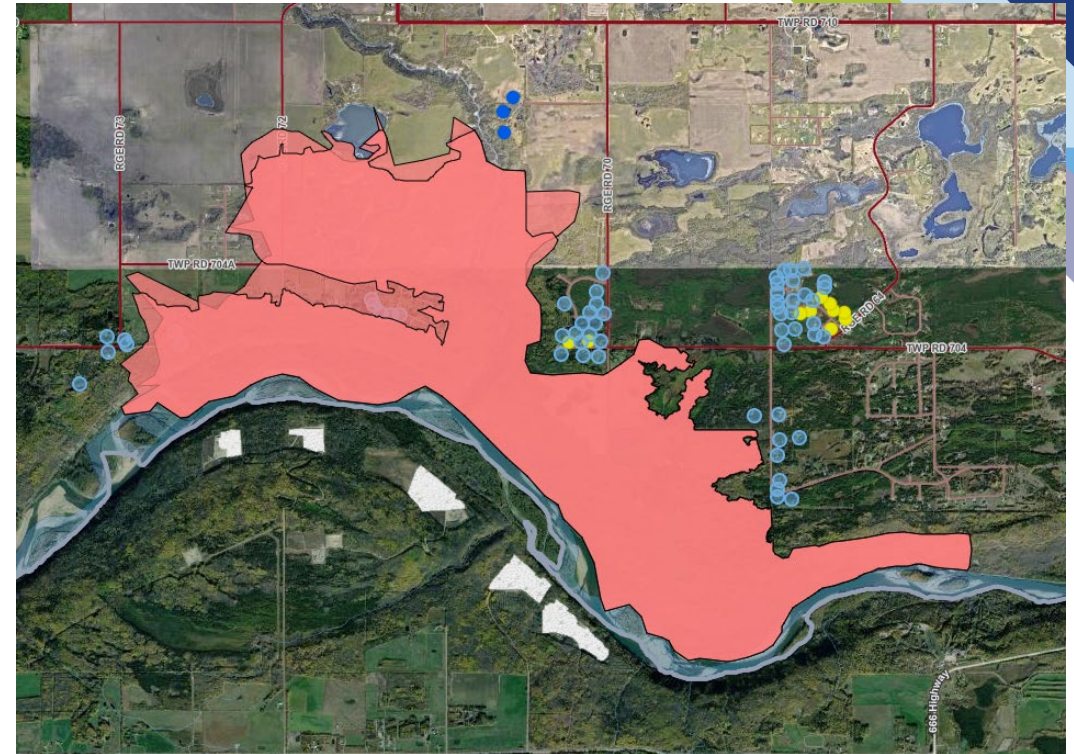




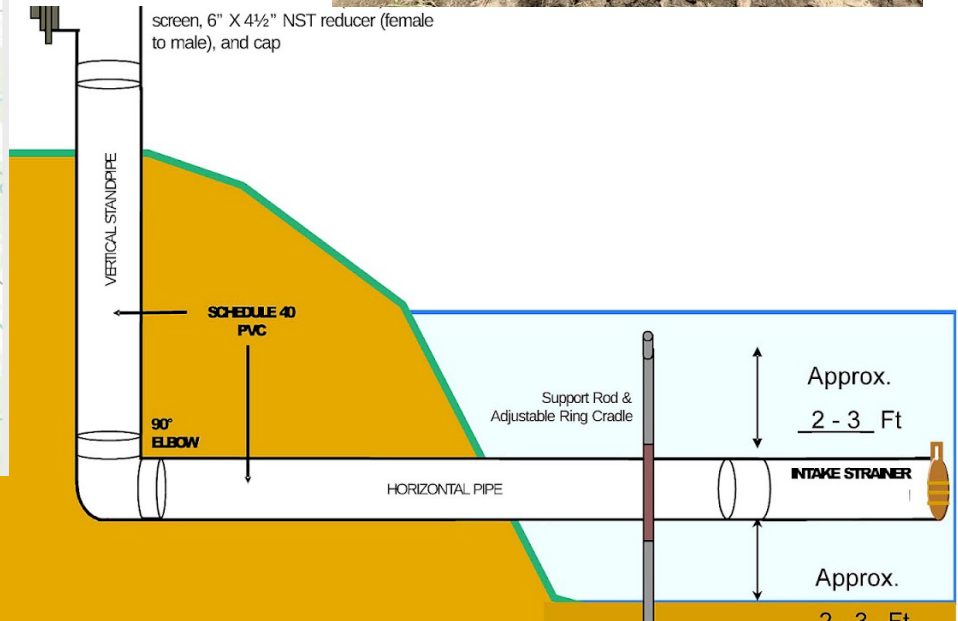
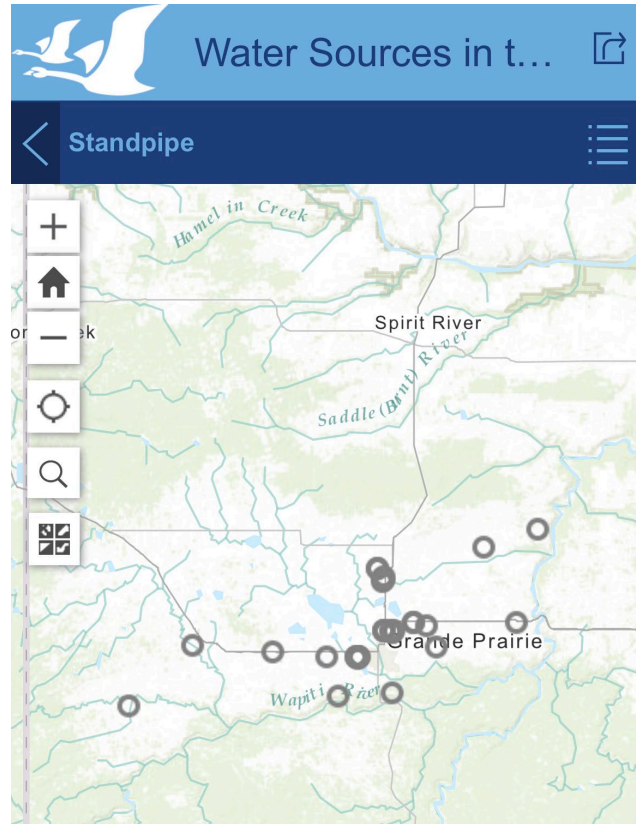
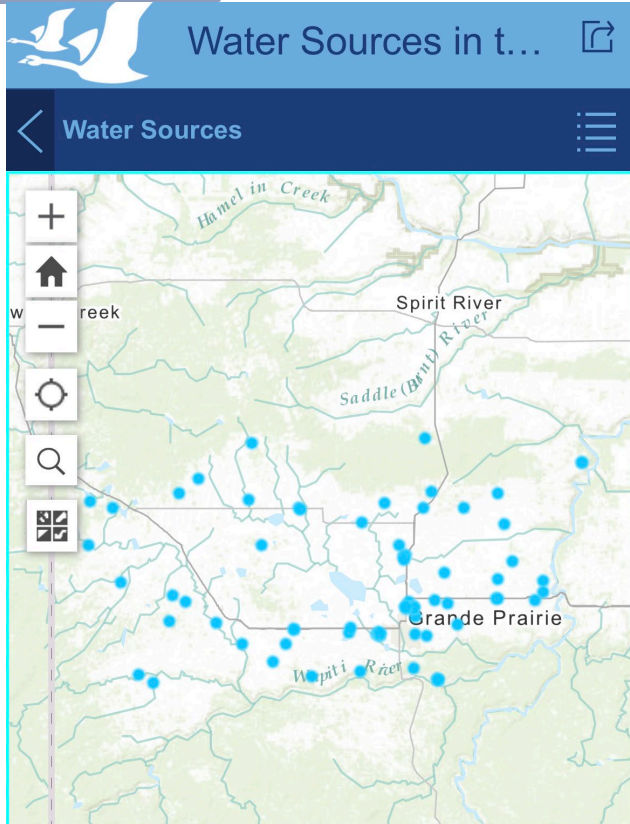
Water Supply for WUI

What are the needs?

- Where is it coming from?
- How is it applied for suppression?
- Is it mobile?



Where is it Coming From?



How is it used?

Direct Action
=
Putting Water on the
Fire



© WILLIAM W. VAVREK PHOTOGRAPHY

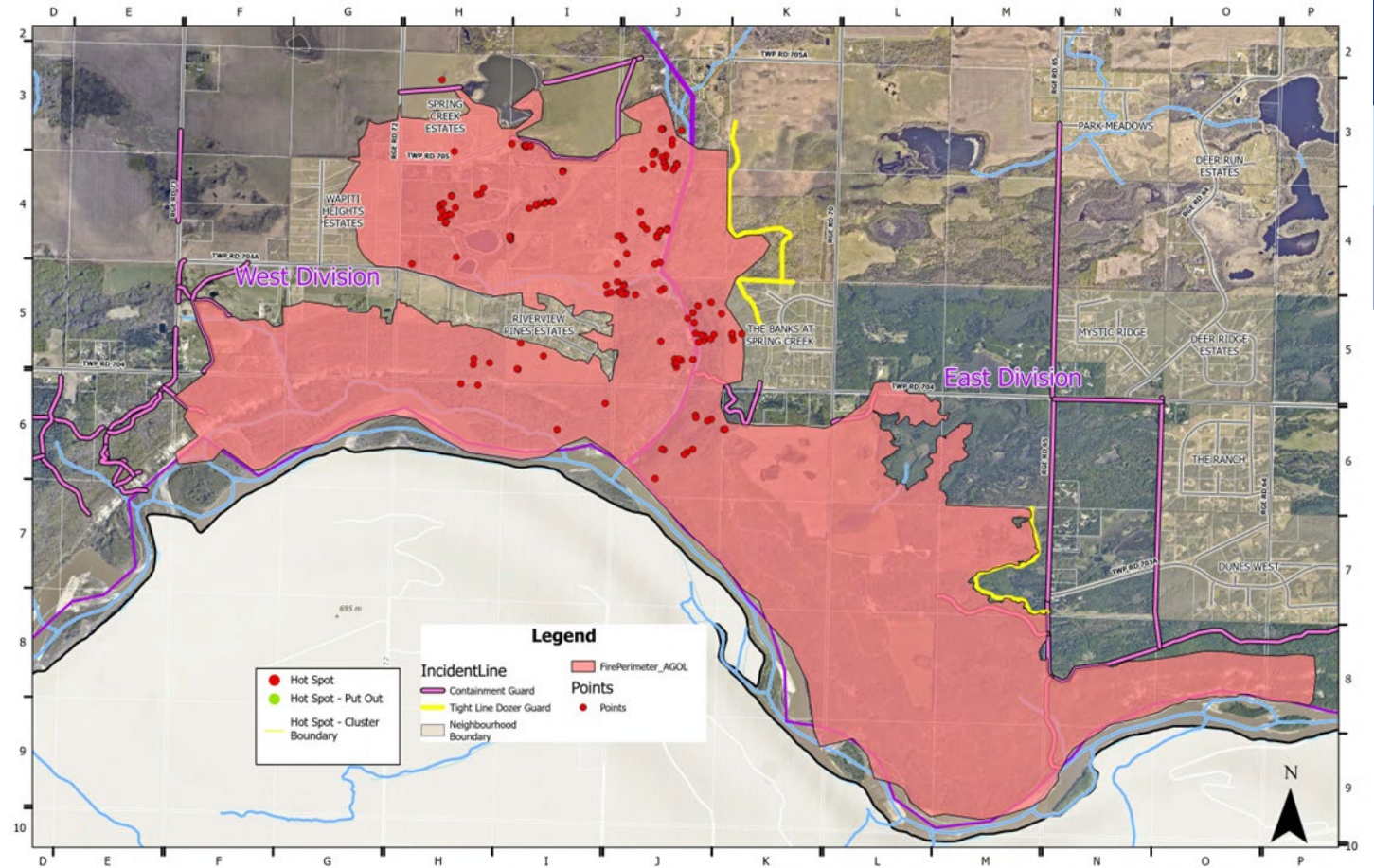


How is it used?



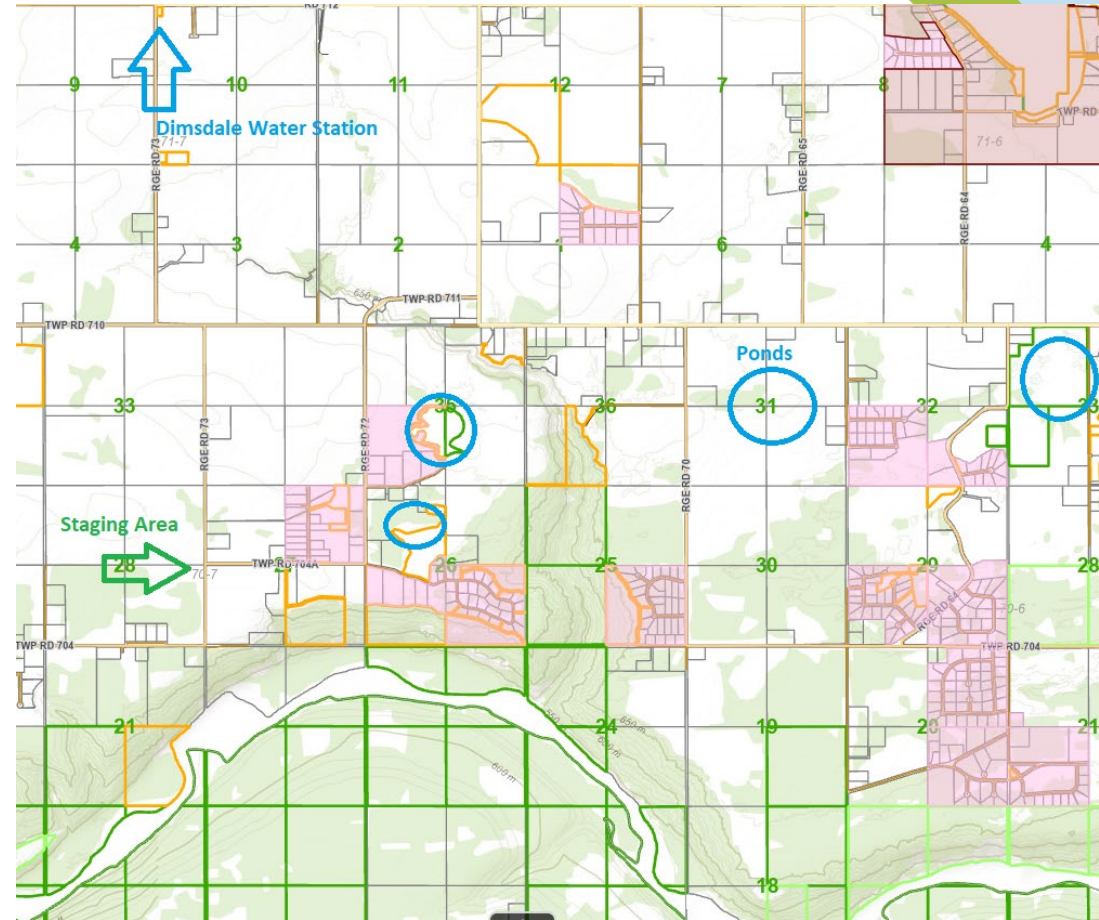
Mobility is key

- 1400 ha = 14 mil. sq. m
- 14 sq km
- Perimeter + 45 km
- Unpredictable fire behavior
- Low volume over large area



Dunes West Wildfire

- Helicopters – Ponds & River
- Fire Dept Water Trucks – Dimsdale
- Commercial Water Trucks (15) - Dimsdale
- Structural Protection – Pond & Dimsdale



Dunes West Mobility



Dunes West Wildfire

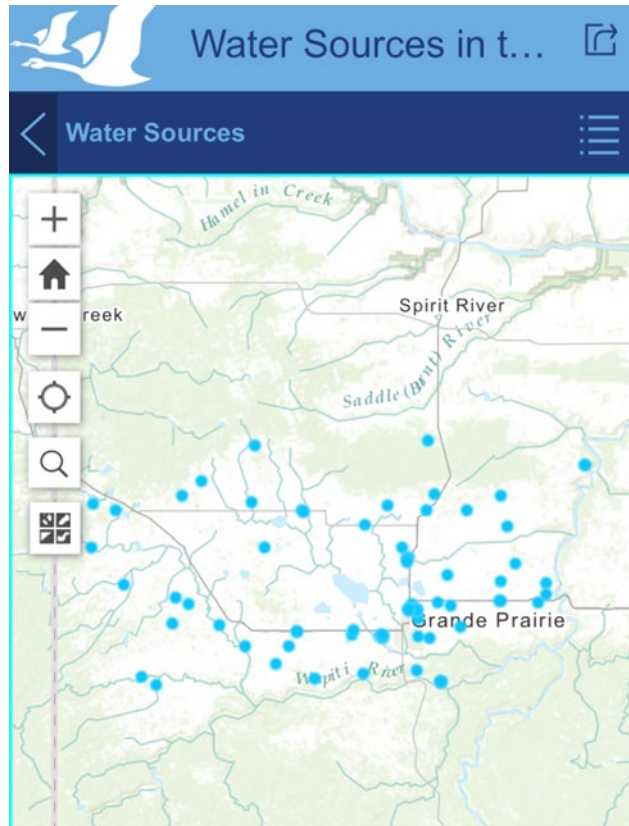




Dunes West Wildfire

- Helicopters – Ponds & River
- Fire Dept Water Trucks – Dimsdale
- Commercial Water Trucks (15) - Dimsdale
- Structural Protection – Pond & Dimsdale

2024 Water Supply?



Confirm our current rural sources



County Fire has 9 Tenders in our
Fleet with 30,000 gallons of Water



2024 Water Supply

- Working with local utilities to monitor conditions.
- Checking the sources regularly to ensure we still have access and a suitable source.
- Monitor drought forecast and plan for the future.



Thank-you
Questions?