

Site C – Reservoir Filling

Dave Hunter, Martin Jasek, Kelvin Ketchum
BC Hydro

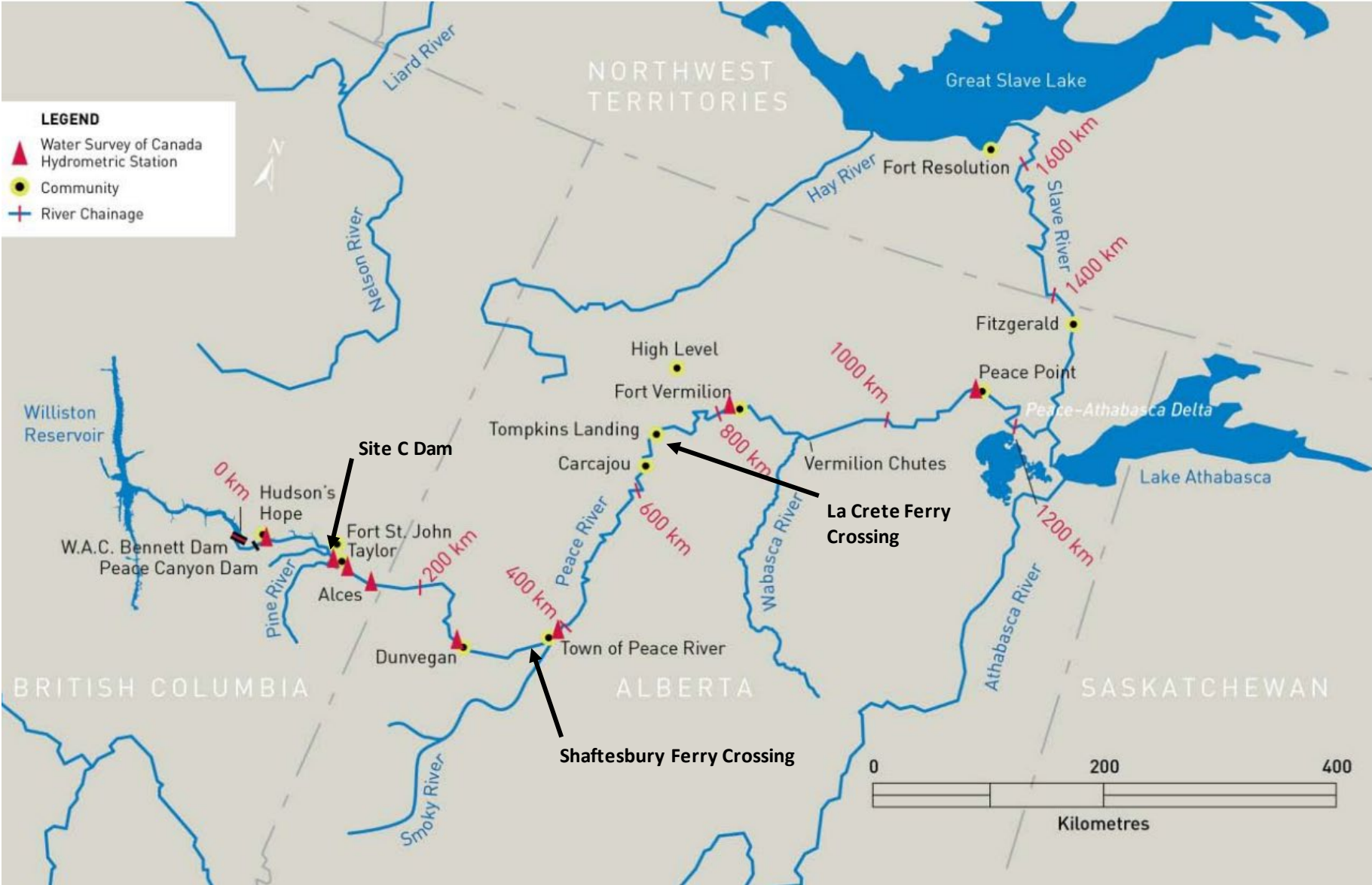
March 7, 2023

Presentation Overview

- Site C Reservoir Overview
- What's the plan – Schedule
- Stages of filling
- Questions



Site Dam and Reservoir

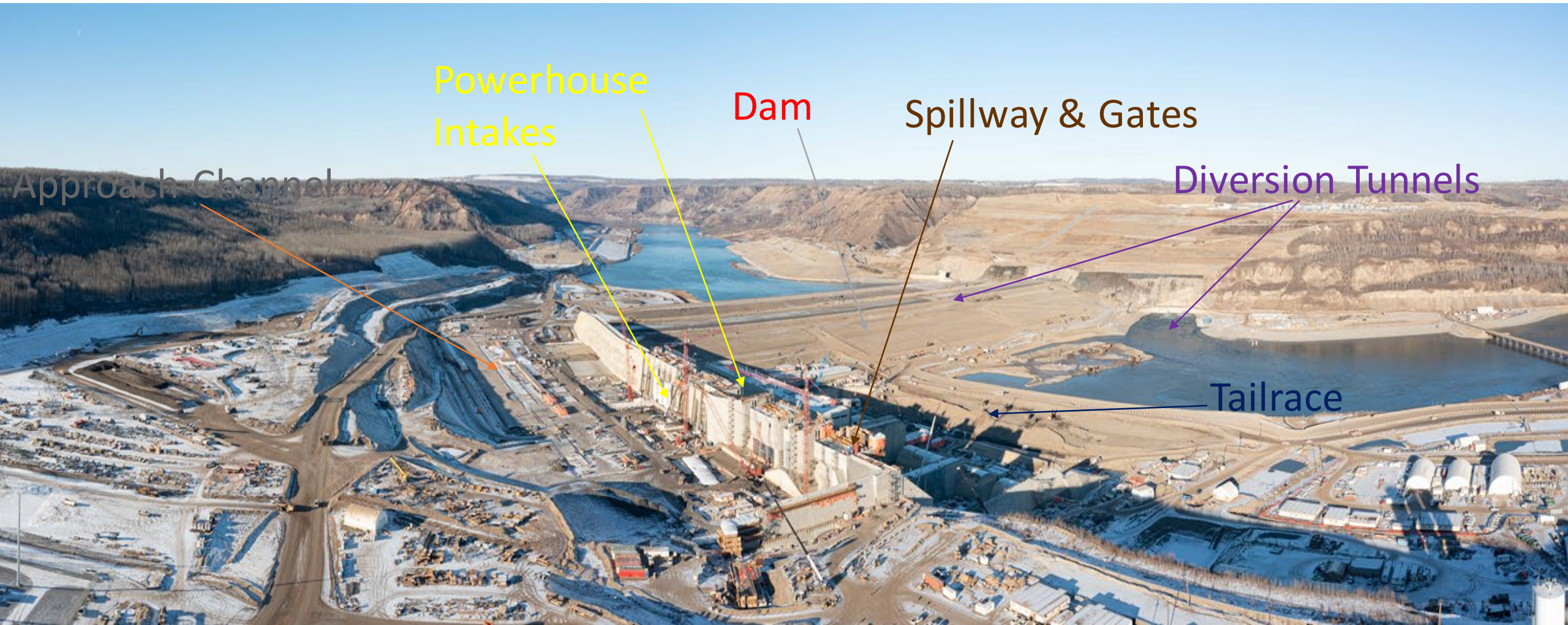


Site C Reservoir

- Peace River diversion in 2020 to support the construction of the main earth fill dam.
- BC Hydro target to fill the reservoir in fall 2023 over approximately 4 months based on environmental constraints, weather, operational and construction progress.
- 2022-2023 – final construction season ahead reservoir filling
 - Dam site structures including earthfill dam, spillways, and approach channel fit for service
 - Complete reservoir clearing
 - Complete Highways 29 realignment (30 km of new highway & six new bridges) and decommissioning activities

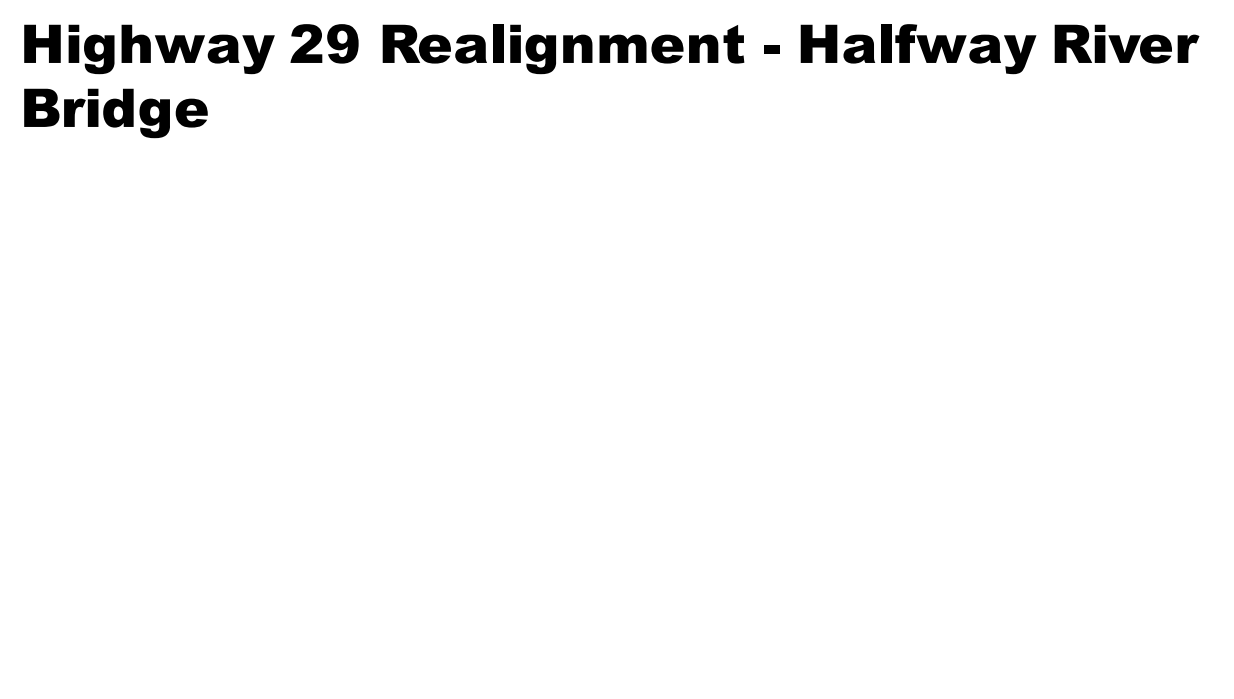


Conversion Plan – Complete the work





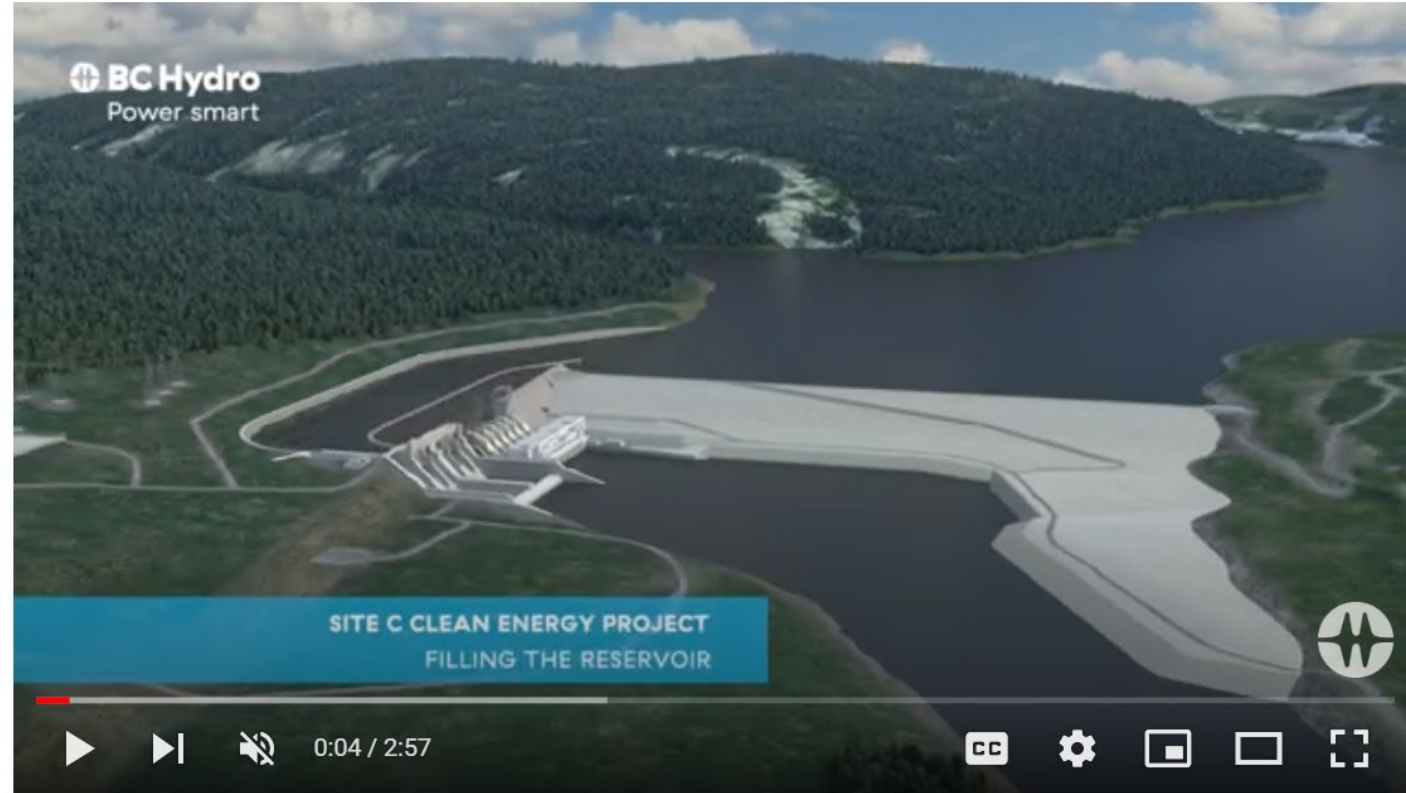
Reservoir Clearing



Highway 29 Realignment - Halfway River Bridge



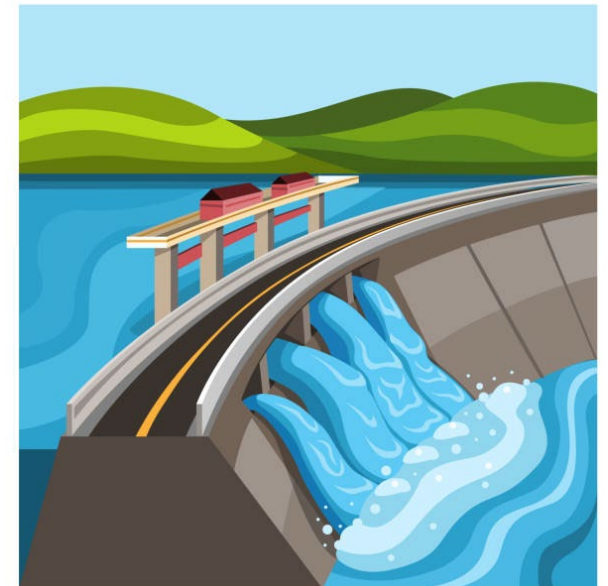
Reservoir Filling Information Video



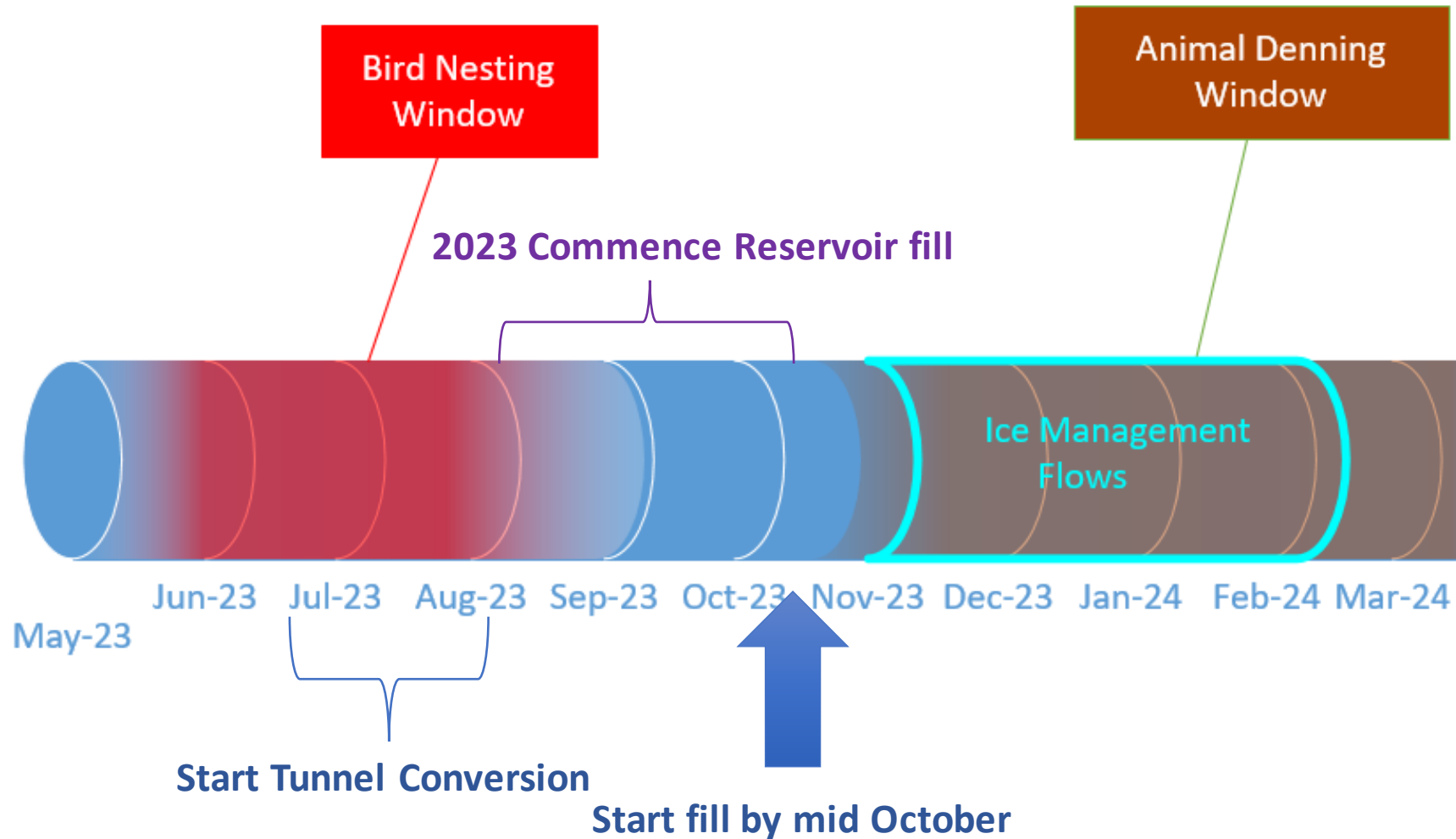
Video [Link](#) (3 minutes); Reservoir Filling [Information Page](#)

What impacts reservoir filling?

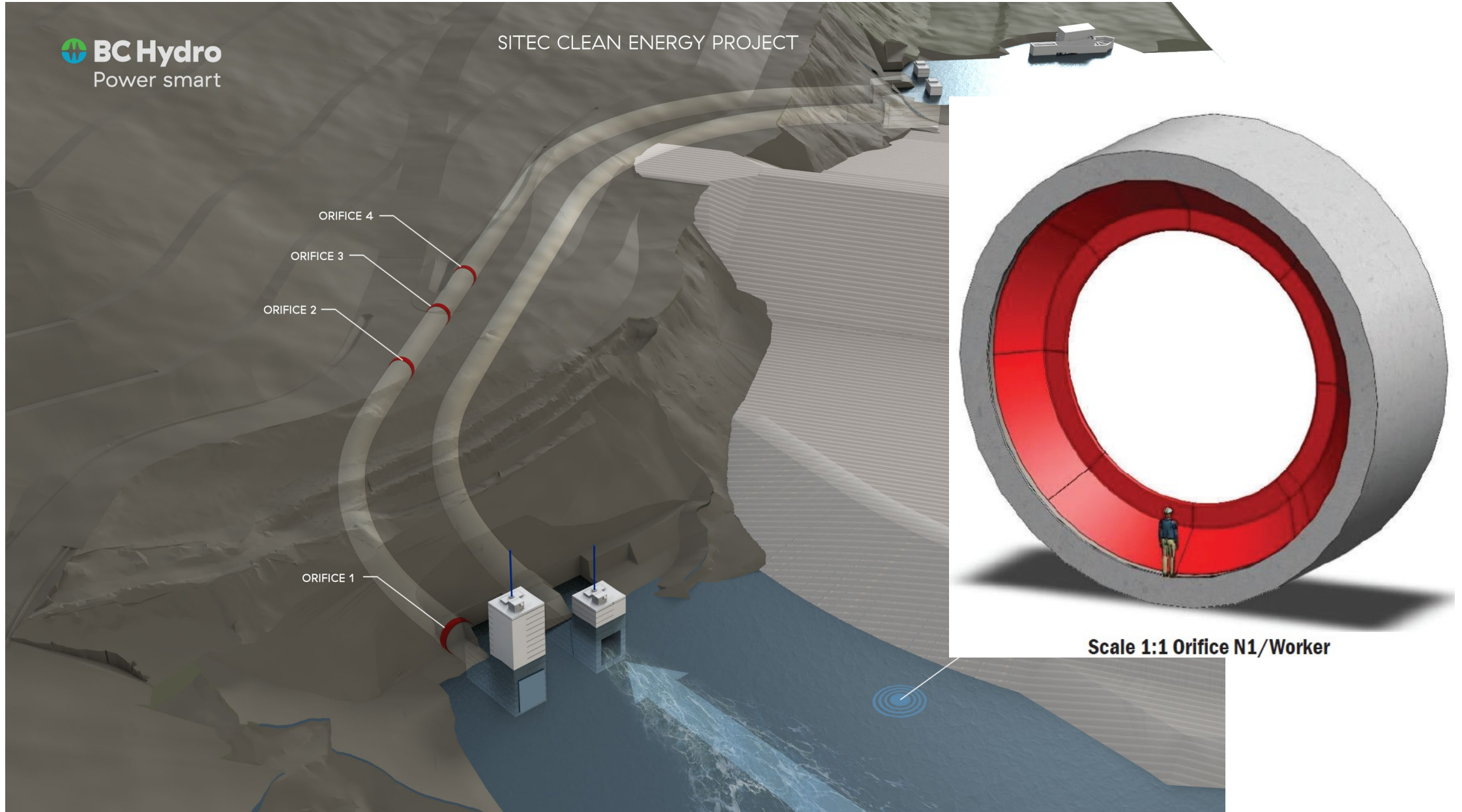
- Construction progress
- Environmental constraints
- Weather & ice
- Operational constraints



What's the Plan? - Convert and fill in 2023



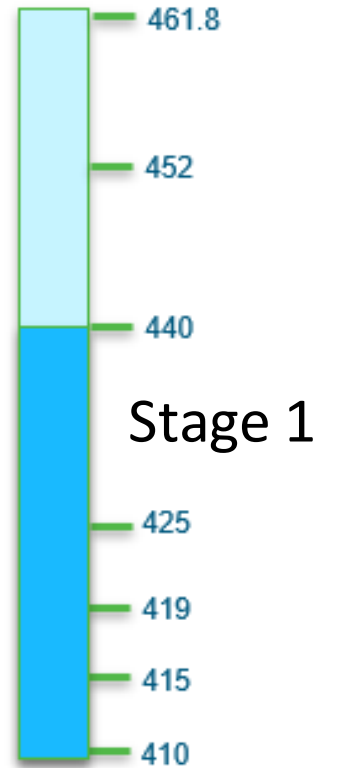
Tunnel Conversion - Orifice installation



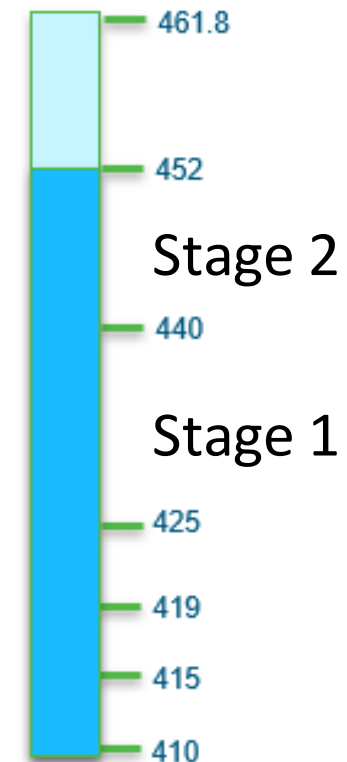
Orifice installed – Gate 1 Close



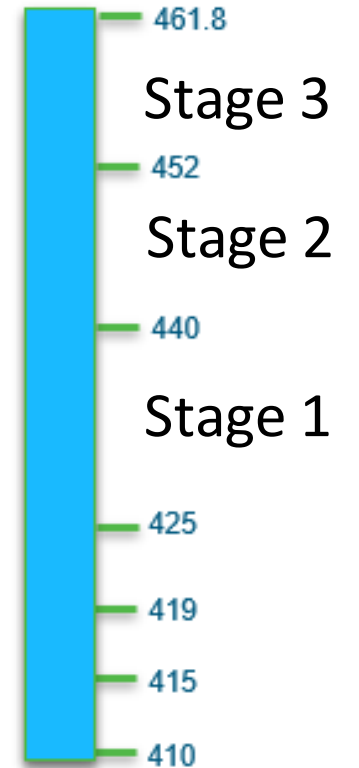
Stage 1 Reservoir Fill



Stage 2 Reservoir Fill



Stage 3 Reservoir Fill



Downstream flows

The mostly likely scenario is expected to be:

- 4 – 5 weeks of low flows (within historical range) beginning in late September
 - Flows from Site C will be with range seen in 2000 – 2019.
 - Downstream fish community is sensitive to higher release levels, hence the project must not exceed key flow thresholds when using the spillway.
- Maximum flows releases are expected to double in early November (600 -> 1,200 m³/s)
- Reduced vehicle capacity at the Shaftesbury Ferry for October & early November, with potential for full outages for a few days.
- Depending on tributary inflows, there will likely be several weeks in October when water is too low for the La Crete Ferry operations.
- BC Hydro will operate the Site C Project within licensed flow limits throughout reservoir filling period.

An aerial photograph of a large concrete dam with multiple spillways, situated in a lush, green mountainous region. A large reservoir of water is visible behind the dam. To the left of the dam, there is a substation with several electrical transformers and power lines. The surrounding landscape is covered in dense evergreen forests, with some rocky slopes visible. The sky is blue with scattered white clouds. The word "Questions?" is overlaid in large, bold, blue letters on the left side of the image.

Questions?