

ALUS Canada in Northern Sunrise County

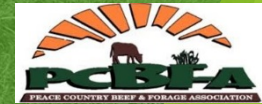
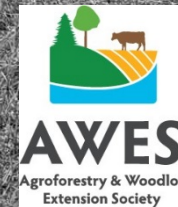
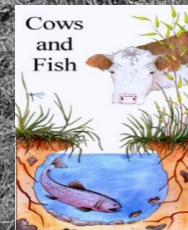
Presentation by:
Becky Devaleriola
ALUS Program Coordinator
June 21, 2018



NORTHERN SUNRISE
COUNTY



alberta
ecotrust



WHAT IS ALUS?

ALUS Canada, A Weston Family Initiative, is a national program helping farmers and ranchers to produce cleaner air, cleaner water, more biodiversity and other ecosystem services in their communities. As a recent Alberta Emerald Award-winner—and guided by a Clean50/Clean 16 award-winning team—ALUS Canada is a recognized leader in sustainability that is revolutionizing the way Canadians support the environment.

And when we look at ALUS by the Numbers, we see...

ALUS Canada by the Numbers

Snapshot of ALUS Canada's impact on the ground

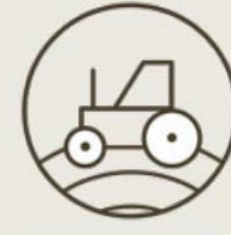
As at March 31, 2018



ALUS active in 5 provinces



21 ALUS communities
+1 since last year



575 farmers & ranchers
participate in ALUS
+202 since last year



15,141 acres of wetland-
related ecosystems
+4,725 since last year



13,882 acres of pollinator
habitat
+3,849 since last year



3,637 acres reforested
with native trees and shrubs
+960 since last year



18,518 acres of land in
ALUS
+4,969 since last year



Nearly \$6.5M invested by
ALUS Canada
+1.7M since last year



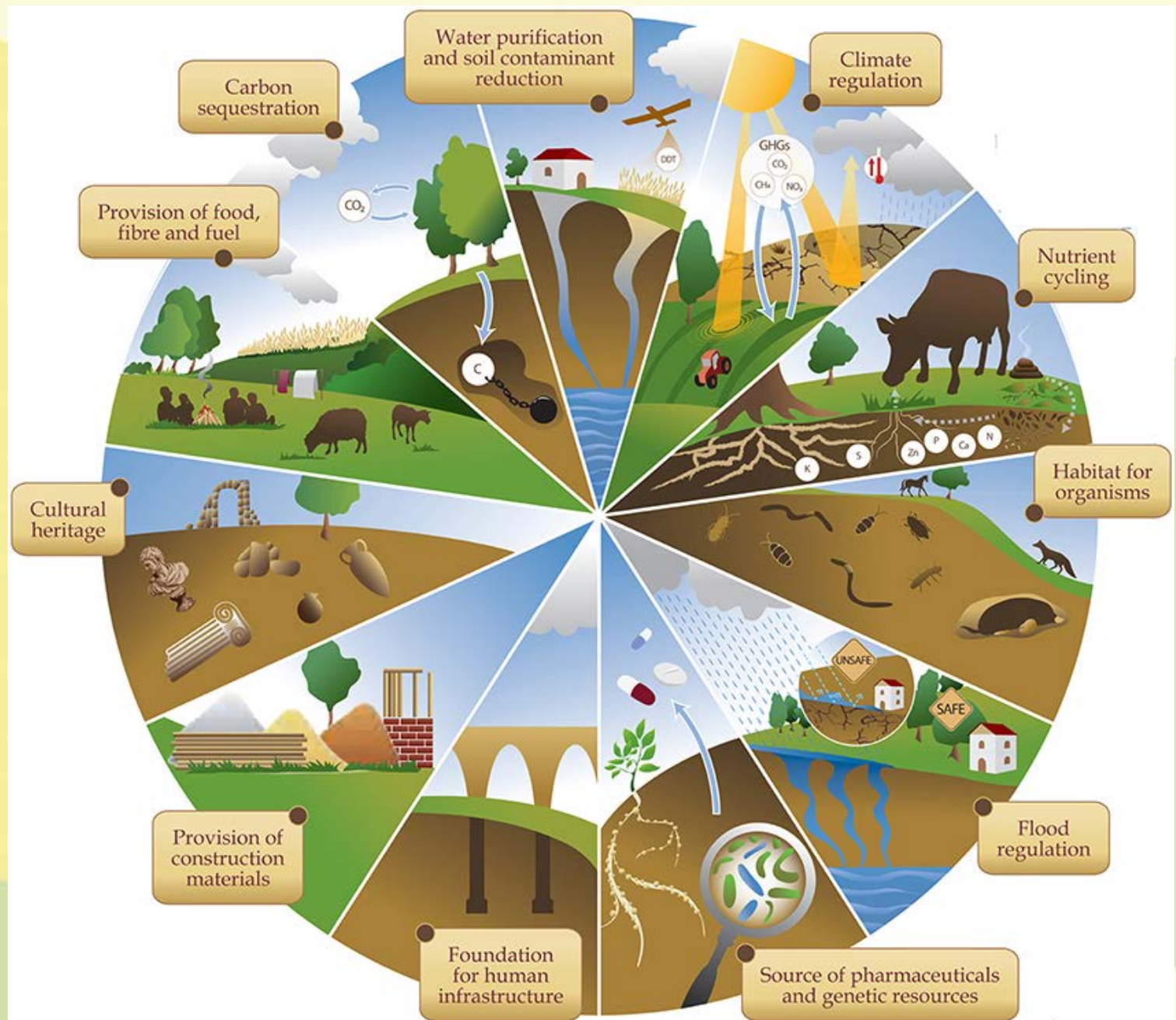
Farmers, ranchers and
communities multiply our
investment on the ground



ALUS.ca

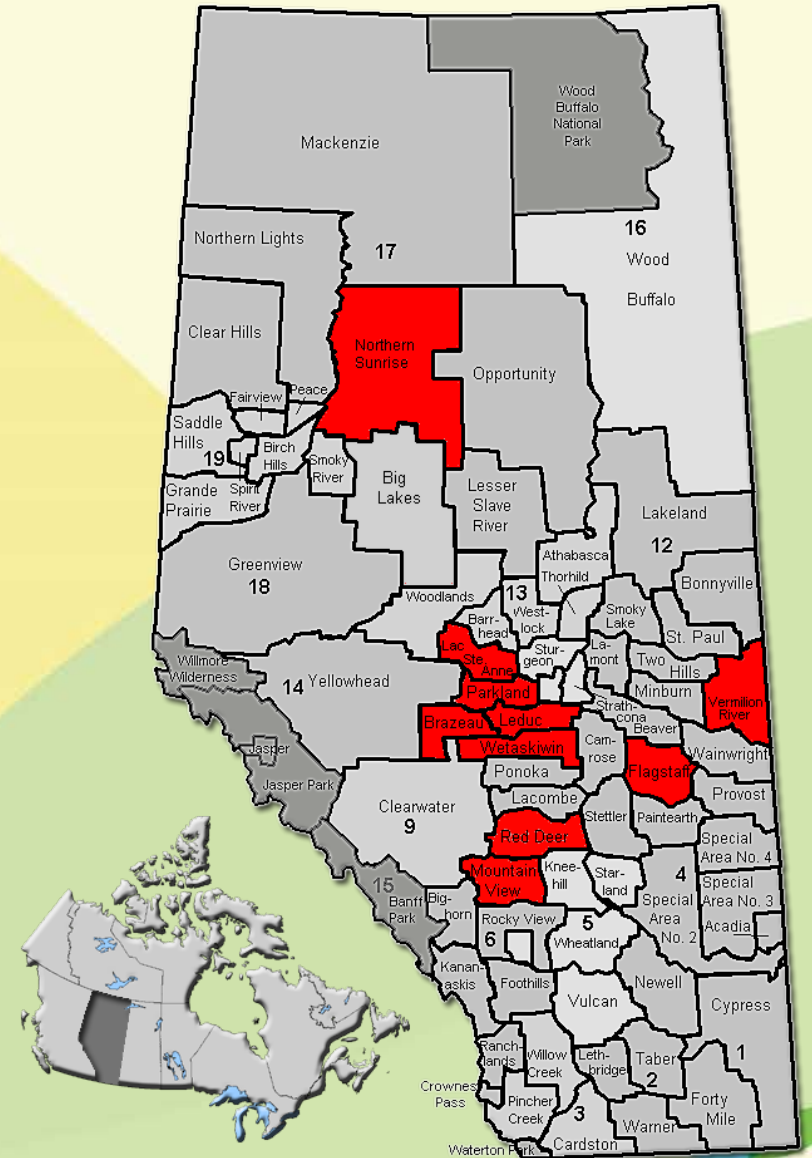
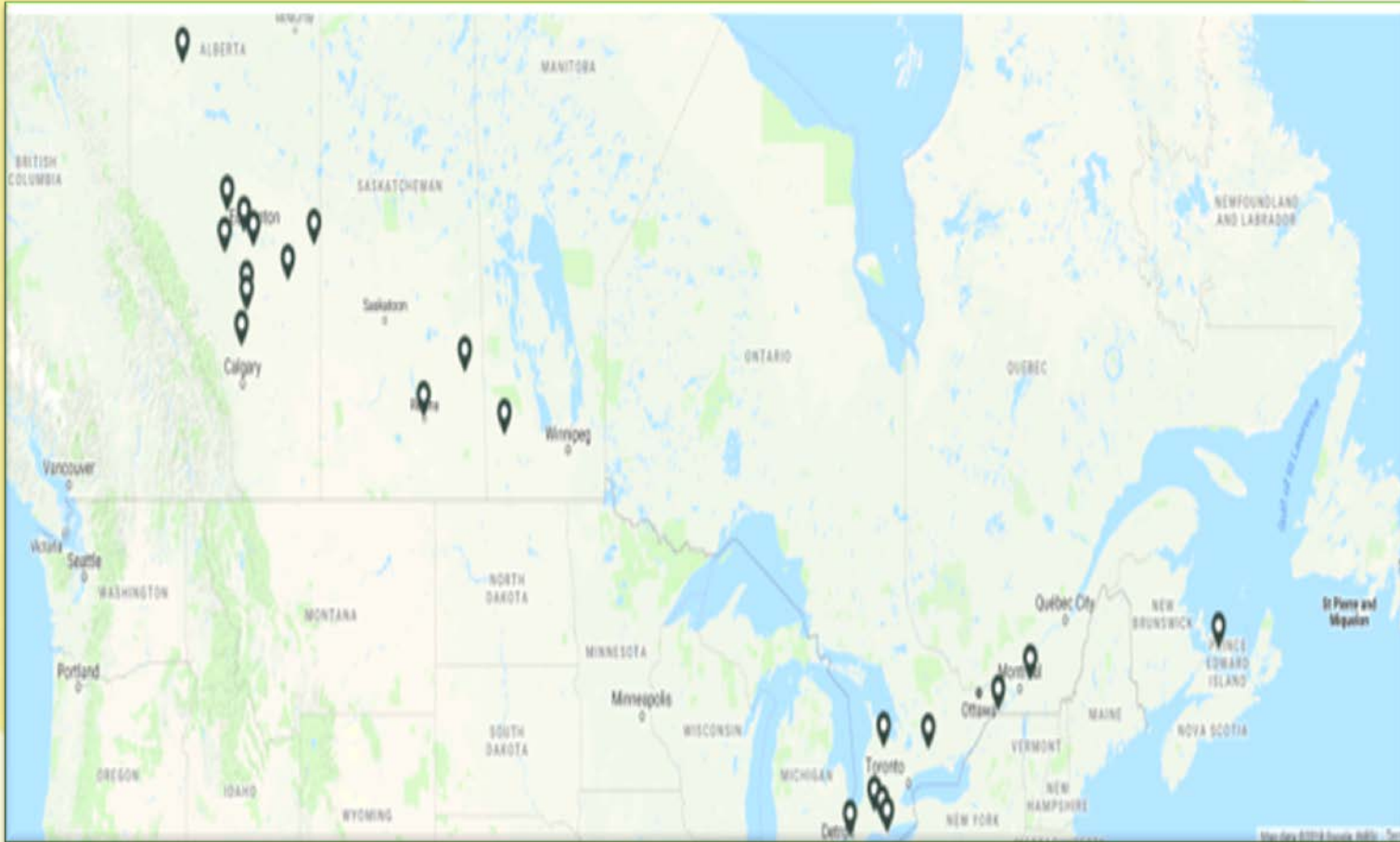
Ecosystem services are the ecological functions that provide direct benefit to humans / human society.

- Riparian Buffers
 - Erosion Control
 - Water Purification
 - Habitat Creation
 - Pollinator Habitat
 - Windbreak/Shelterbelt
 - Soil Amendment
 - Wildlife Corridors
 - Water Control
 - Sediment Capture
 - Water Retention
 - Flood Control
 - Carbon Sequestration
 - Biodiversity Enhancement
 - Air Purification
- And the list goes on...





ALUS - ALTERNATIVE LAND USE SERVICES IN ALBERTA



WHY IS ALUS SO POPULAR IN ALBERTA?

- + Coalition of the willing – farmers who want to do good
- + Municipalities that are eager to solve problems
- + Agricultural Service Boards approving new policy
- + Market mechanisms that make the world go around
- + Awesome people (like you!)

= The key to success that we all benefit from 😊



Aldo Leopold, North America's "father of wildlife conservation",
was on to something some eight decades ago!
He believed private landowners, for the most part farmers, are the key to conservation.

**"Conservation will ultimately boil down to rewarding the private landowner
who conserves the public interest."**

Aldo Leopold, 1934

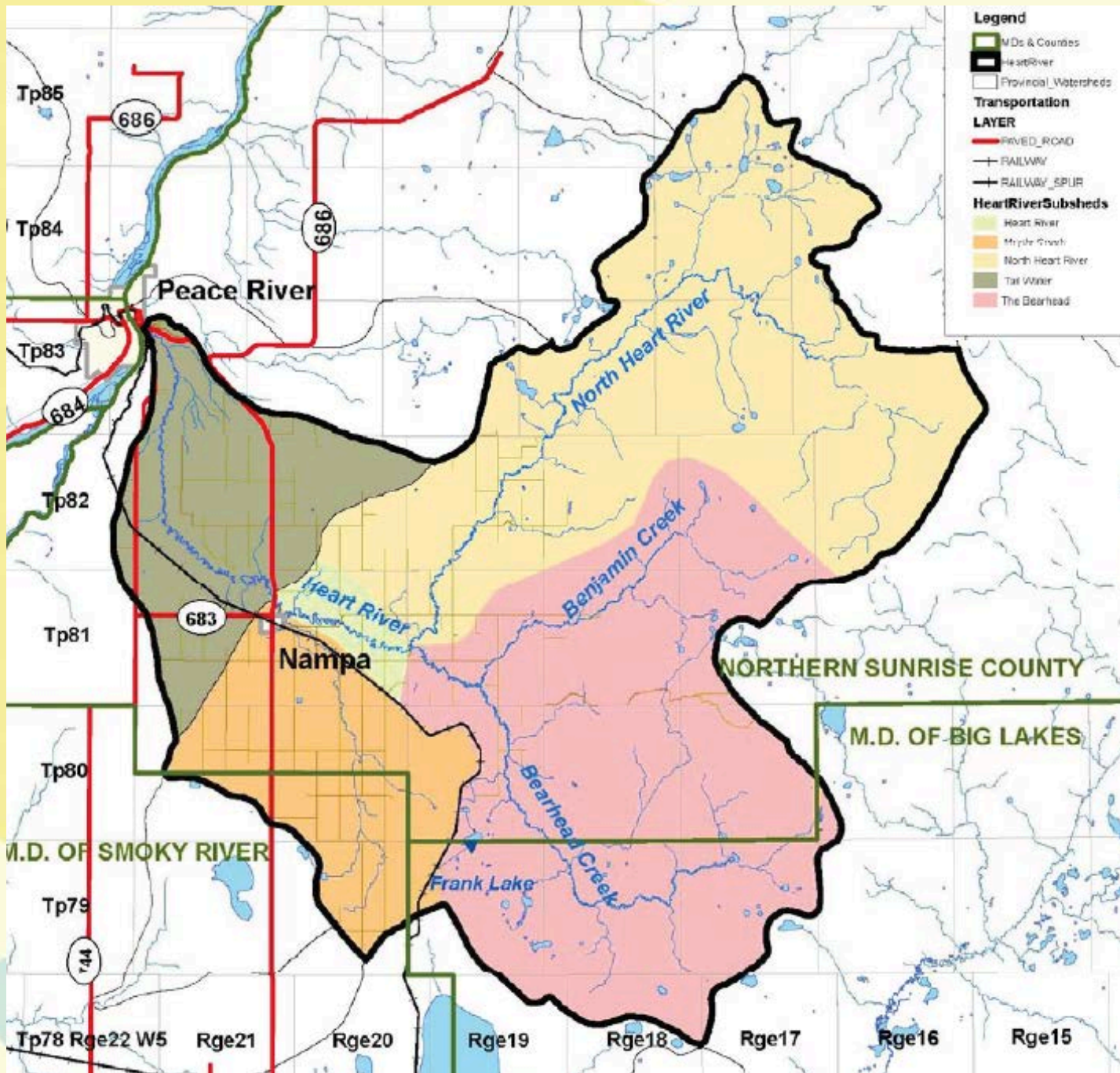
This is the principle upon which ALUS Canada was built.



ALUS CORE PRINCIPLES

1. Farmer-delivered
2. Community-developed
3. Integrated
4. Targeted
5. Accountable
6. Science-based
7. Voluntary
8. Market-driven





The primary objective of the Water Action Plan was to:

Provide safe, sustainable, and secure drinking water supply

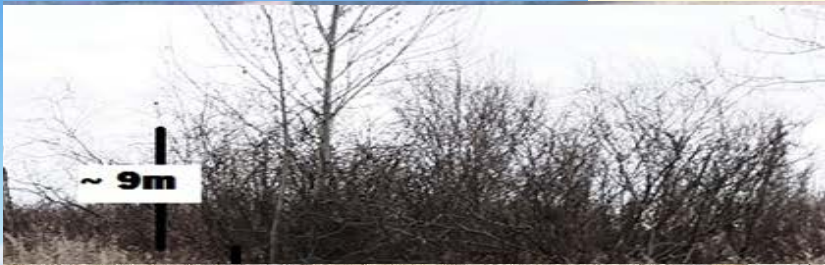
Reduce nutrient, bacteria and pesticide loadings to the river and its' tributaries

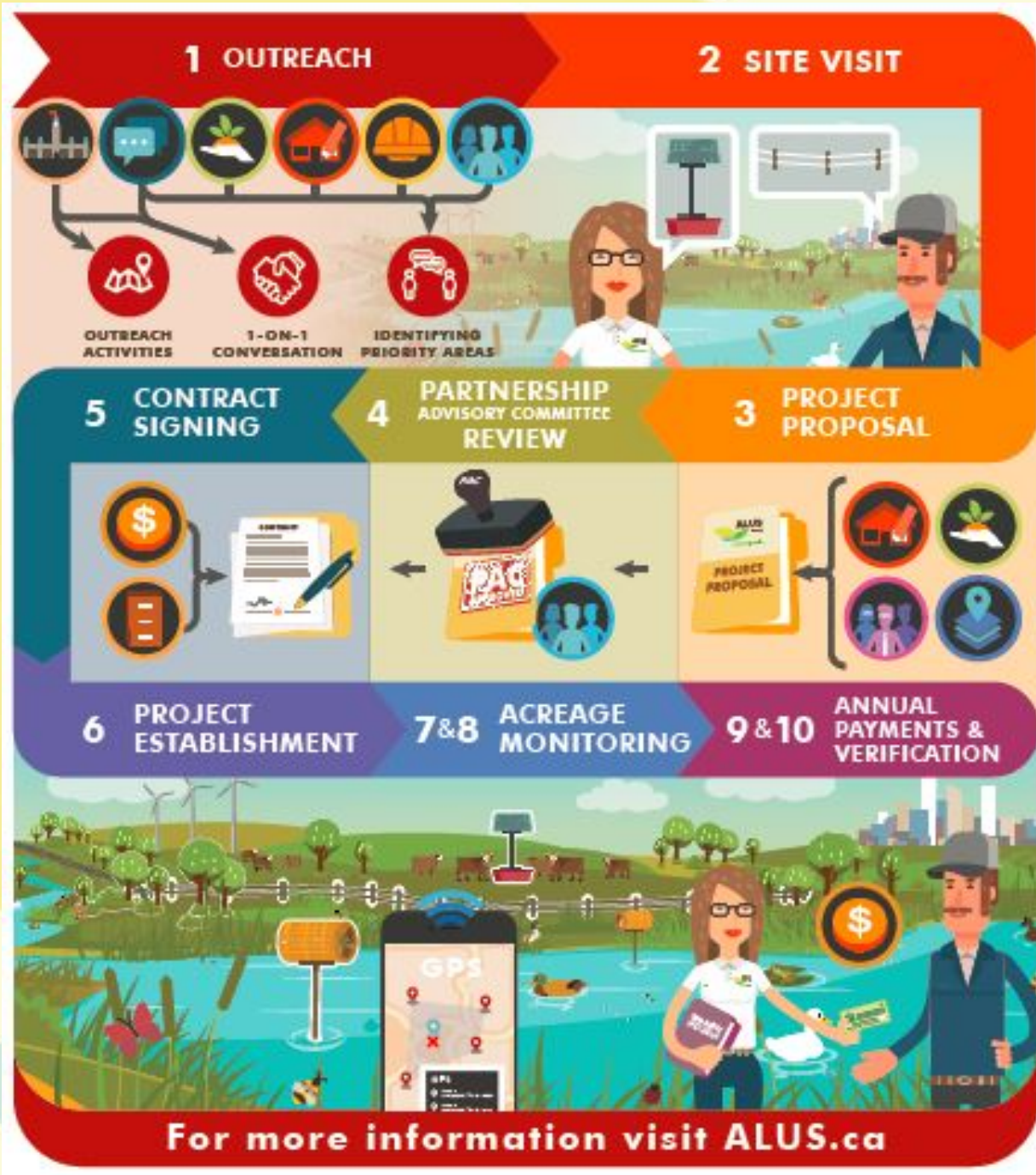
Improve wildlife and fish habitat

Improve the health of the aquatic environment through riparian health and wetland management

Increase public awareness and engagement of land stewardship activities

Promote best management practices to minimize impacts to water quality and wildlife habitats





ALUS PROCESS

1. Outreach
2. Site Visit
3. Project Proposal
4. PAC Review
5. Contract Signing
6. Project Establishment
7. Acreage Monitoring
8. Project Verification
9. Annual Payment

OUTREACH

- Annual Ag Tour
- Websites
- Workshops & Events
- Social Media – Twitter, Facebook
- Newsletters
- Trade Shows & Information Booths
- Printed material

We are striving to create an opportunity for 1-on-1 conversations with the Producer.

Extension and Education Activities

- 2-Day Riparian Management Workshop with AWES and Cows & Fish June 15-16th
- SARDA Field School | ALUS will be out in the field July 19th
- ALUS Northern Sunrise Ag Stewardship Tour | Tour registered with Alberta Farm Days August 18th
- Shelterbelt Workshop | Providing information for the new NSC Shelterbelt Program Winter 2018/19
- Bee Box Workshop with AWES in February 2019



EXPRESSION OF INTEREST



Expression of Interest For

ALUS Canada Prairie Hub and Western Hub (Manitoba, Saskatchewan)

PERSONAL INFORMATION (please fill in all sections)			
Applicant Name:		Date (DD-MM-YY):	
Mailing Address:	City:	Province:	Postal Code:
Phone:	Cell:		
Email:	Email for ALUS e-newsletter:		
Website: www.:	Farm Facebook page? (Y or N)	Twitter handle: @	
Tax Roll No.:	Farm Registration No.:		
SIN No.:	How many acres do you farm, including rented lands?		
Farm/Ranch Description			
Legal Land Description:			
Farm Address (if different from above):			
Farm Name (if applicable):			
What is/are the main commodity(ies) produced on your land?			
What is the total area of your land, in acres? Of this total, how many acres are:			
Woodlot?	Pasture?	Cultivated?	Other? (describe)
What is the soil type and quality on your land?			
Site Visit/Form Completion			
Would you be interested in a site meeting on your land to review environmental opportunities and/or assistance with completing this form? (Y or N)			
If yes, when are you available:			
How did you hear about ALUS?			

PERSONAL INFORMATION (please fill in all sections)			
Applicant Name:		Date (DD-MM-YY):	
Mailing Address:	City:	Province:	Postal Code:
Environmental Farm Plan		ALUS e-newsletter (if different):	
Have you attended an Environmental Farm Plan (EFP) workshop? (Y or N)		Date of workshop? (month, year):	
Did you complete an EFP for your farm/ranch that was deemed appropriate through peer review? (Y or N)		Twitter handle: @	
Project(s) Description		Registration No.:	
How many acres are you interested in enrolling in the ALUS program?		How many acres do you farm, including rented lands?	
What type of projects do you have in mind for your land that would improve the environment while fitting with your working farm plans? (Attach a separate sheet if more space is needed.)			
		Name (last, first, middle initial):	
		Address (street, city, province, postal code):	
		Phone (home, cell, fax):	
		Email:	
		Other contact information:	
		Signature (print name):	
		Signature (handwritten):	
		Date:	
		Other:	
Demonstration Farms			
ALUS Demonstration Farms typically showcase multiple ALUS-funded projects on one farm. Periodically, Demonstration Farmers are asked to host tours of their farm, and/or speak from the perspective of a farmer participating in the testing of the ALUS concept. Would you be interested in being highlighted as an ALUS Demonstration Farm? (Y or N)			



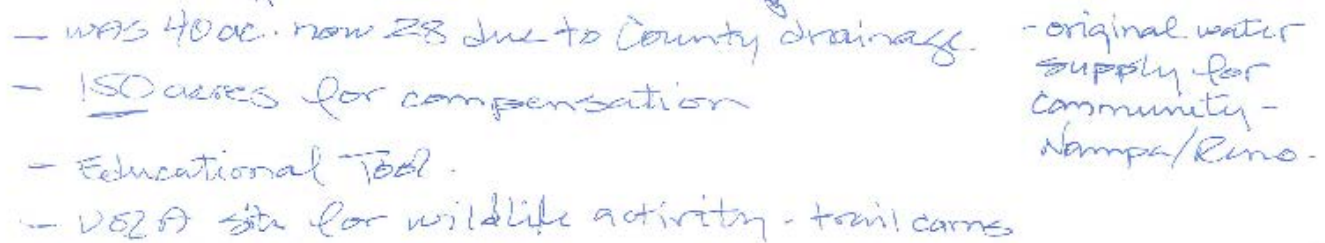
6/19/2018

Have you attended an Environmental Farm Plan (EFP)

Date of workshop? (month,

Legal: 5W-5-81-20-W5

Acres: 150



PROJECT PROPOSAL AND PAC REVIEW

- Coordinator takes information from meeting and prepares a proposal
- Present project to the Partnership Advisory Committee (PAC)
- Project reviewed and scored using the P.E.A.T. (Program Eligibility Assessment Table)
- Project score will determine the priority of the project.

P.E.A.T.

12-Mar-18



PROGRAM ELIGIBILITY ASSESSMENT TABLE

PROJECT #:	NSC-00038K-C0039-2018-01-025
PROJECT DESCRIPTION:	Wetland Conservation, Education, Research
WATERSHED:	Heart River Watershed

Notes: 150 acres total; what type of project; how many acres to enter into ALUS (10%?); \$25/acre

POINTS

Ranking Priority #5

Applicant:	2 Producer	1 Acreage (10 acres)	0 Landowner	0		
Project size	0 0 - 0.59 acres	2 0.6 - 2.49 acres	3 2.5 - 9.9 acres	2 10 - 39.9 acres	0 40 - 160 acres	0
Applicant's Contribution:	12 80 - 100 %	9 60 - 79.9 %	6 40 - 59.9 %	3 20 - 39.9 %	0 0 - 19.9 %	0
Project Location:	3 Restoration	2 New Area	2 Marginal Land	1 Protected Area	3 Existing Wetland	3
PROJECT BENEFITS (add all applicable benefits)						BONUS POINTS
Positive Impacts:	1 Wildlife Habitat	2 Riparian Creek	3 Pollinator Habitat	3 Wetland Water Storage		3
Additional Benefits:						
TOTAL POINTS*						6

COST BENEFIT RATIO

POINTS	Level
1 - 4	Four
5 - 9	Three
10 - 14	Two
15 +	One

CONTRACT & PROJECT ESTABLISHMENT

- Producers sign a 10 year voluntary Project Maintenance Agreement
- ALUS and Partners (NSC, GOA, NGO's) often fund 50% or more of project costs through various grant opportunities and in-kind services.
- Project establishment can begin once funding has been determined.
- And the vision becomes reality ☺

To PARTICIPANT:

Address:
E-mail:
Attention:

Participant: SMITH
Contract Date:
PROPERTY DESCRIPTION
Roll Number

PROJECT DETAILS
Original ProjectID
Contract
Year

2016 PAR-000015-C0001-201

2016 PAR-000015-C0001-201

PROJECT DESCRIPTION
Project ID

PAR-000015-C0001-2016-01-01

PAR-000015-C0001-2016-02-02



MONITORING

- New projects are assessed for baseline condition within 1st year of establishment through...
 - Riparian or range health assessment
 - Photo points
 - Report card
- Projects are monitored regularly for general health and success.



ANNUAL PAYMENTS AND VERIFICATION

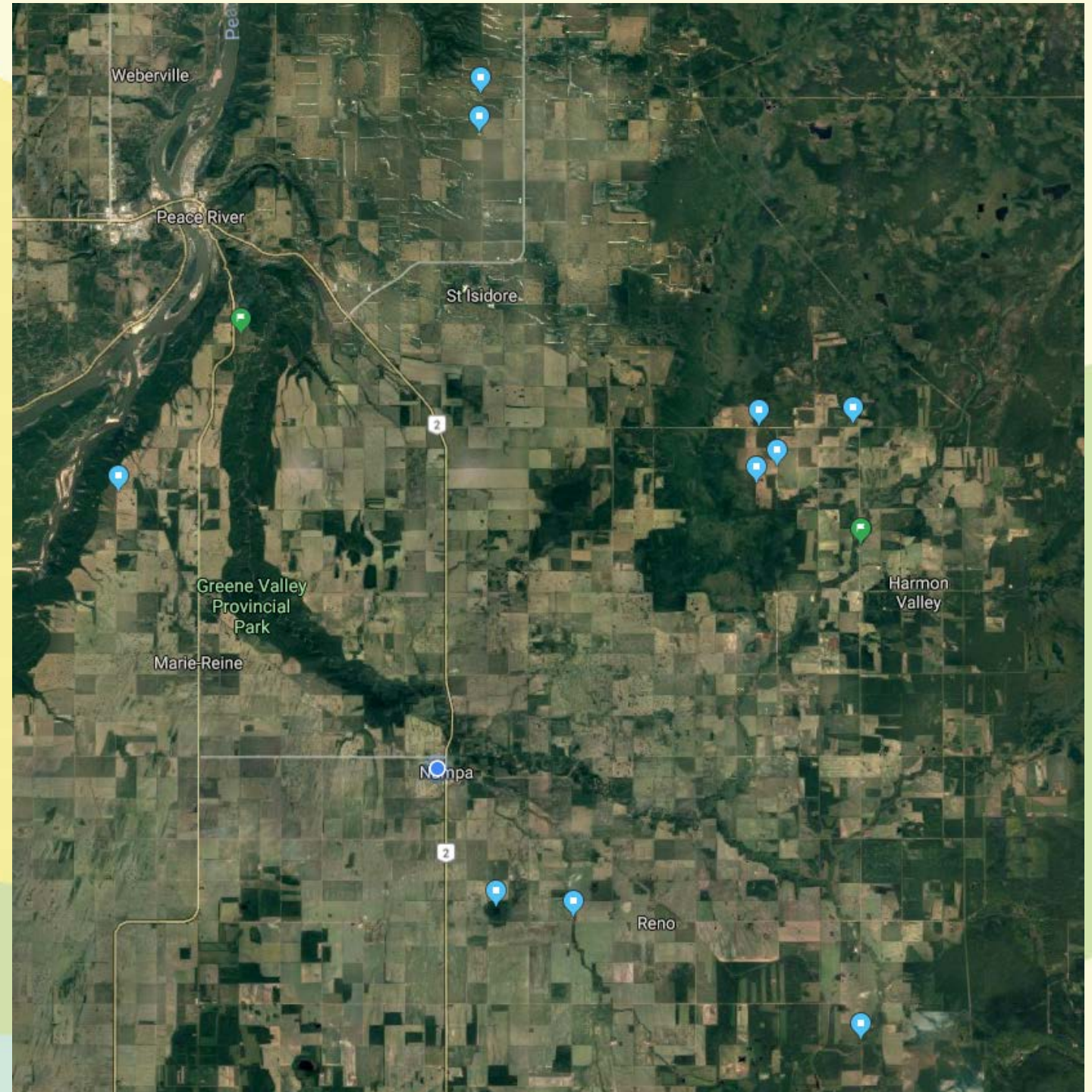
- ALUS pays annual payment for management of new ecological services determined by local land rental rates.
- For example - NSC is paying
 - \$30/acre for pasture
 - \$60/acre for cropland
 - \$15/acre for existing forest
 - \$50/acre wetland (ephemeral in cropland)
- 10% of projects are verified each year by third party consultant



ALUS PROJECTS IN NORTHERN SUNRISE COUNTY

~~~~~

Even though our program is in  
its' infancy, we have  
**7 participants** involved in  
**12 projects** producing  
**122 acres** of  
ecosystem services!



# PARTNERSHIP ADVISORY COMMITTEE (PAC)

## 5 Voting Members

- 1 NSC Councilor
- 4 Local Producers

## 13 Non-voting Advisors

- NSC Director of Agriculture Services
- ALUS Hub Manager (AB)
- Development Officer (NSC)
- Environmental Consultant
- 3 Ag Fieldmen from neighboring MD's
- 2 Councilors from neighboring MD's
- 2 NGO partners





# FUNDING SUPPORT

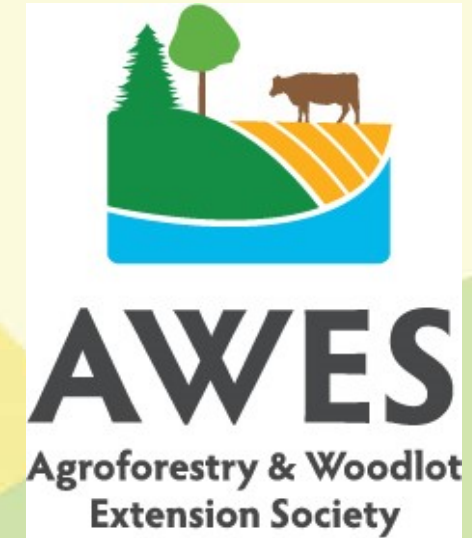
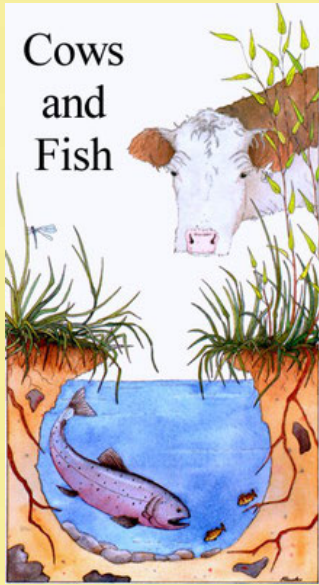


NORTHERN SUNRISE  
COUNTY

*We've got it all!*



# PROJECT PARTNERS





“The strength of the team is each individual member. The strength of each member is the team.” – Phil Jackson







# Thank You

## Questions?



Becky Devaleriola  
ALUS Program Coordinator  
Northern Sunrise County  
(780) 322-3831  
[ALUS@northernsunrise.net](mailto:ALUS@northernsunrise.net)  
[www.alus.ca](http://www.alus.ca)

