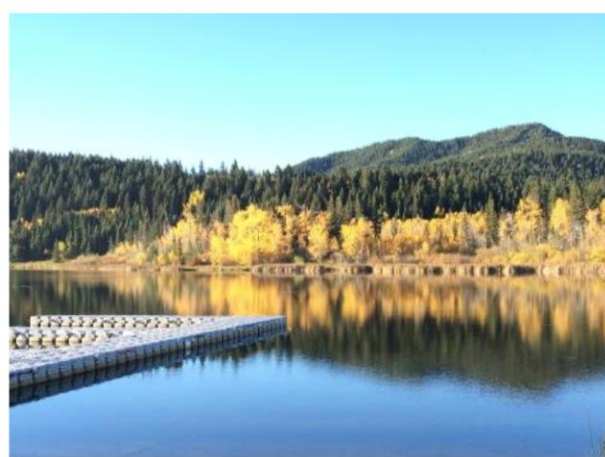


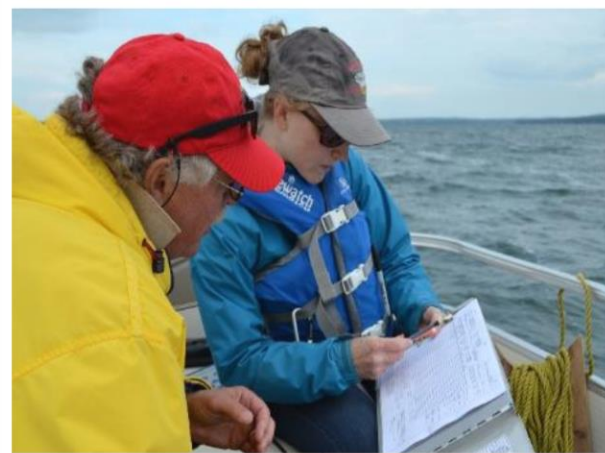
Community Based Monitoring Opportunities for Alberta Lakes

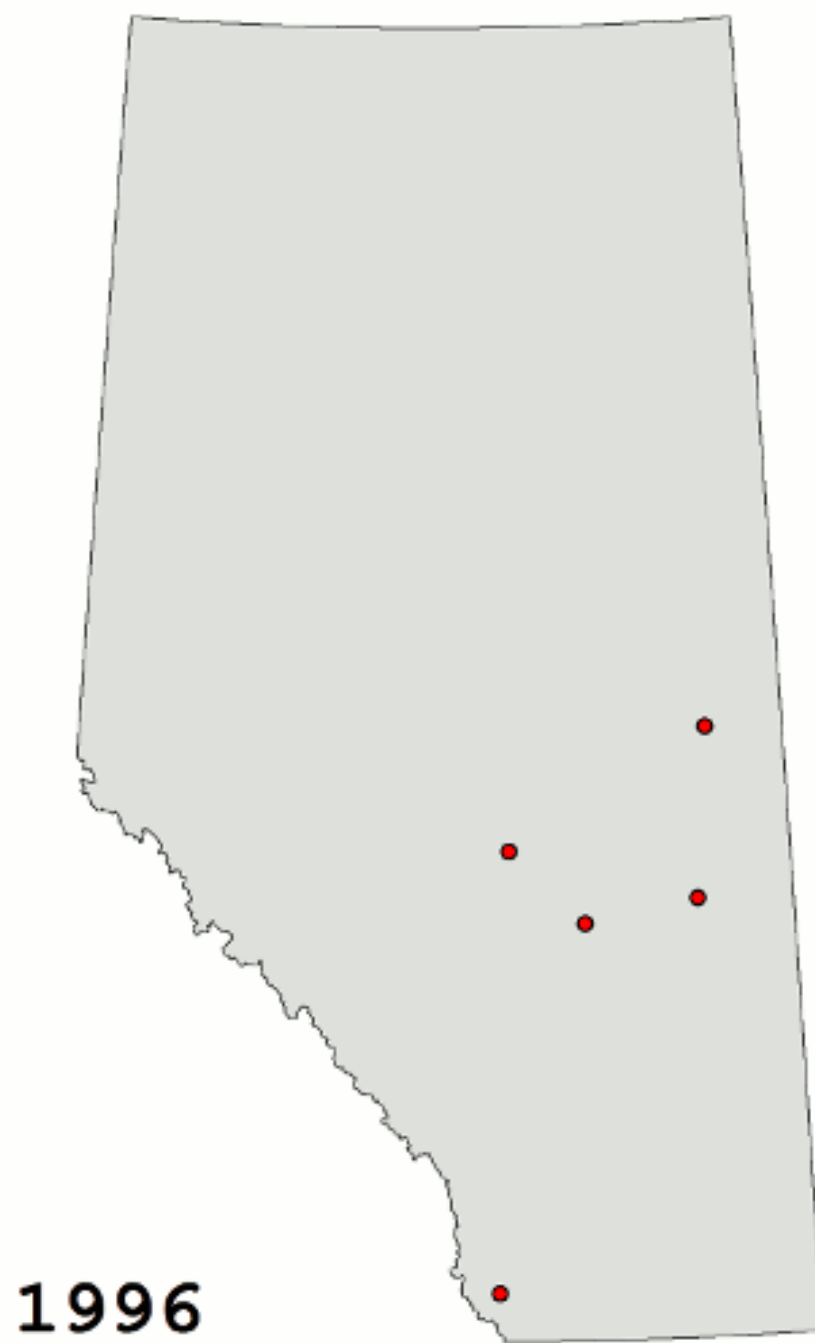
June 21, 2018
Bradley Peter, P. Biol.



05-10-2018





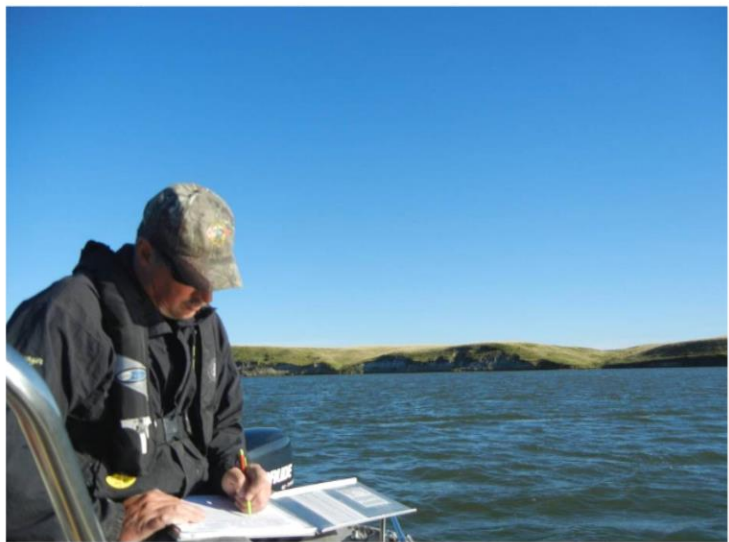




LAKE SELECTION CRITERIA

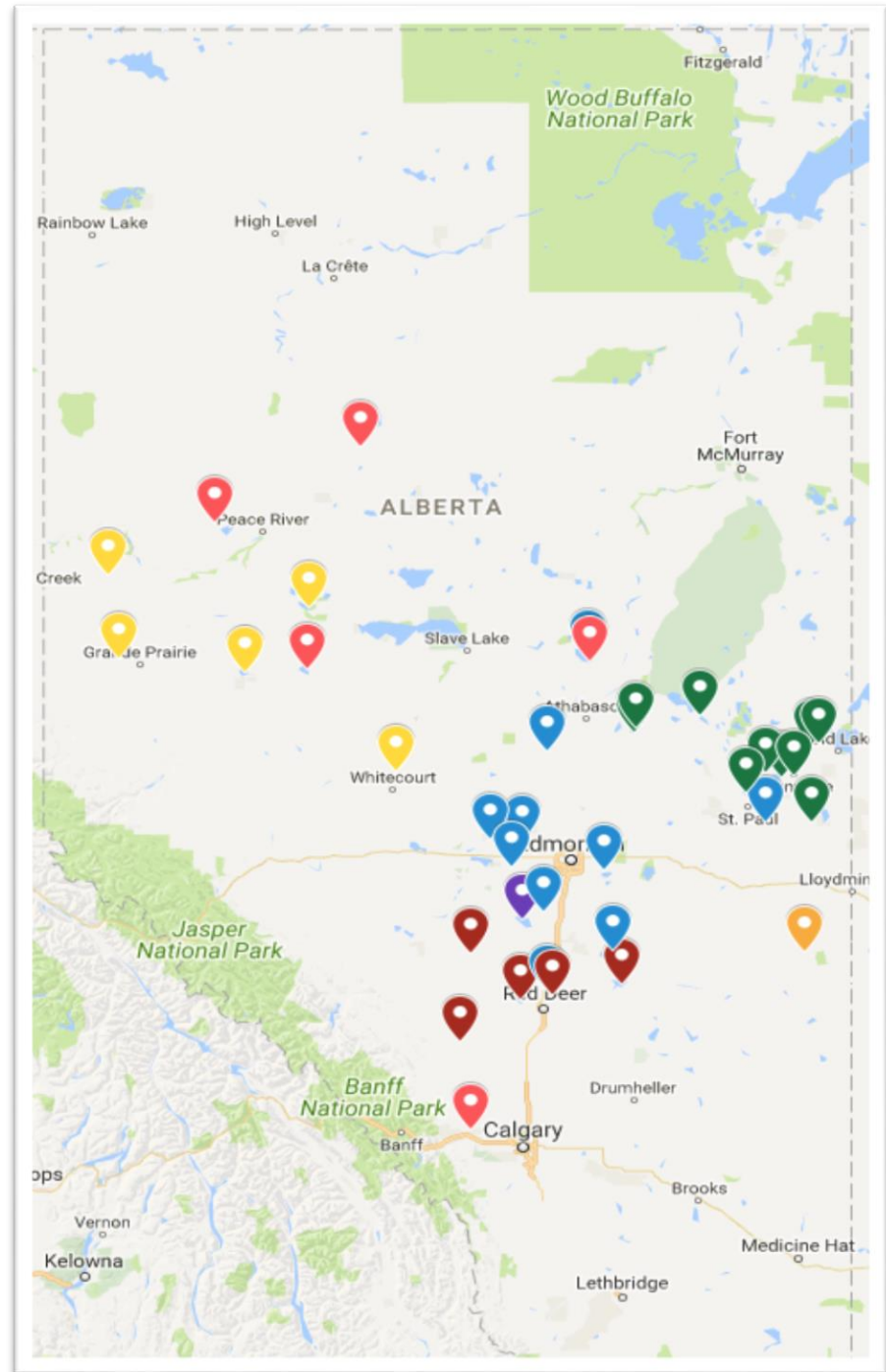


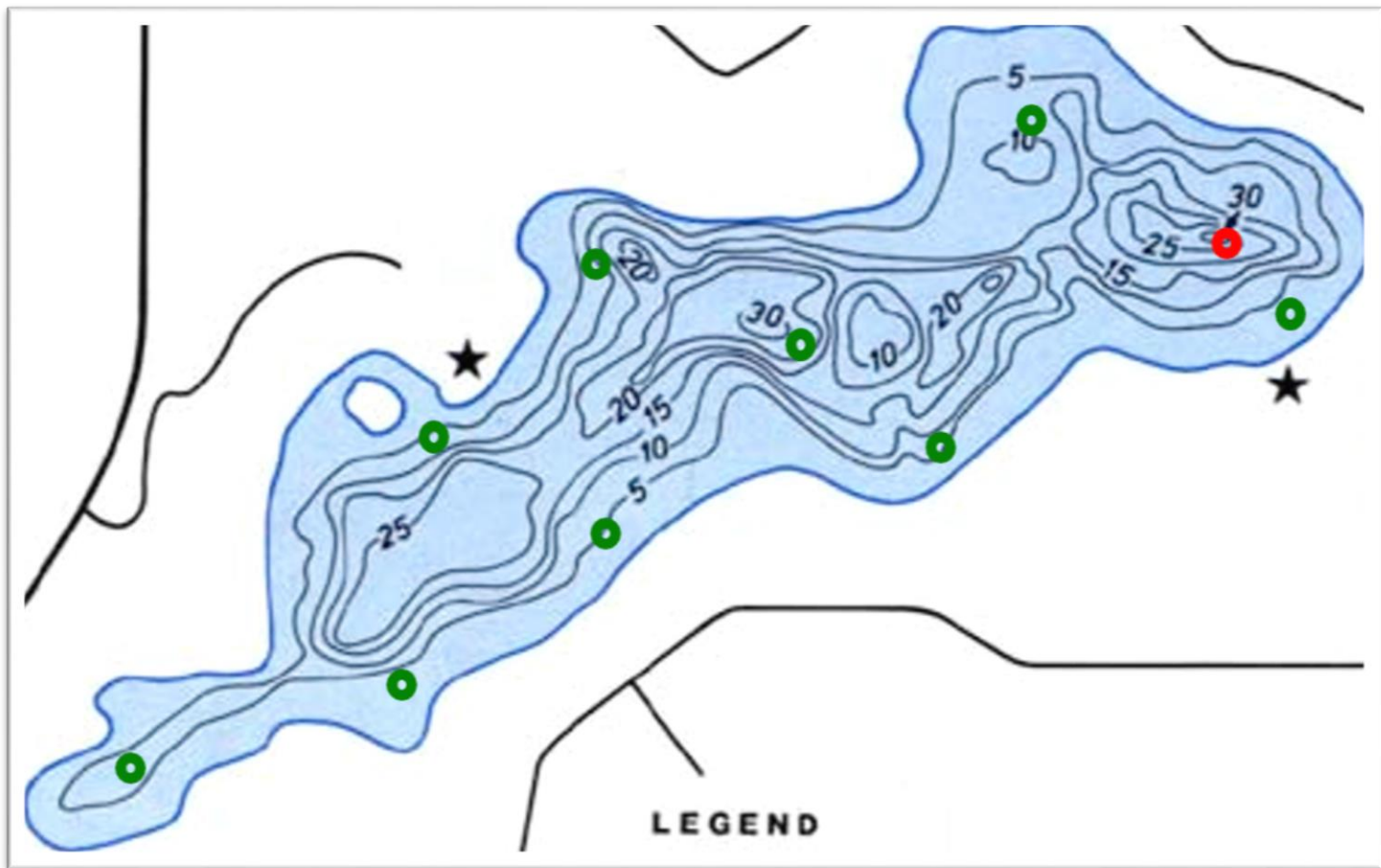
ADDING YOUR LAKE TO LAKEWATCH





-  10 Base Lakes
-  5 Parks Lakes
-  10 LICA
-  5 RDRWA
-  1 PLWA
-  1 MD Wainwright
-  5 LakeKeepers





PROFILE

COMPOSITE



Smoke Lake 2015



Beaver River Watershed Alliance



Ce projet a été réalisé avec l'appui financier de :
This project was undertaken with the financial support of:



 Environnement Canada  Environment Canada



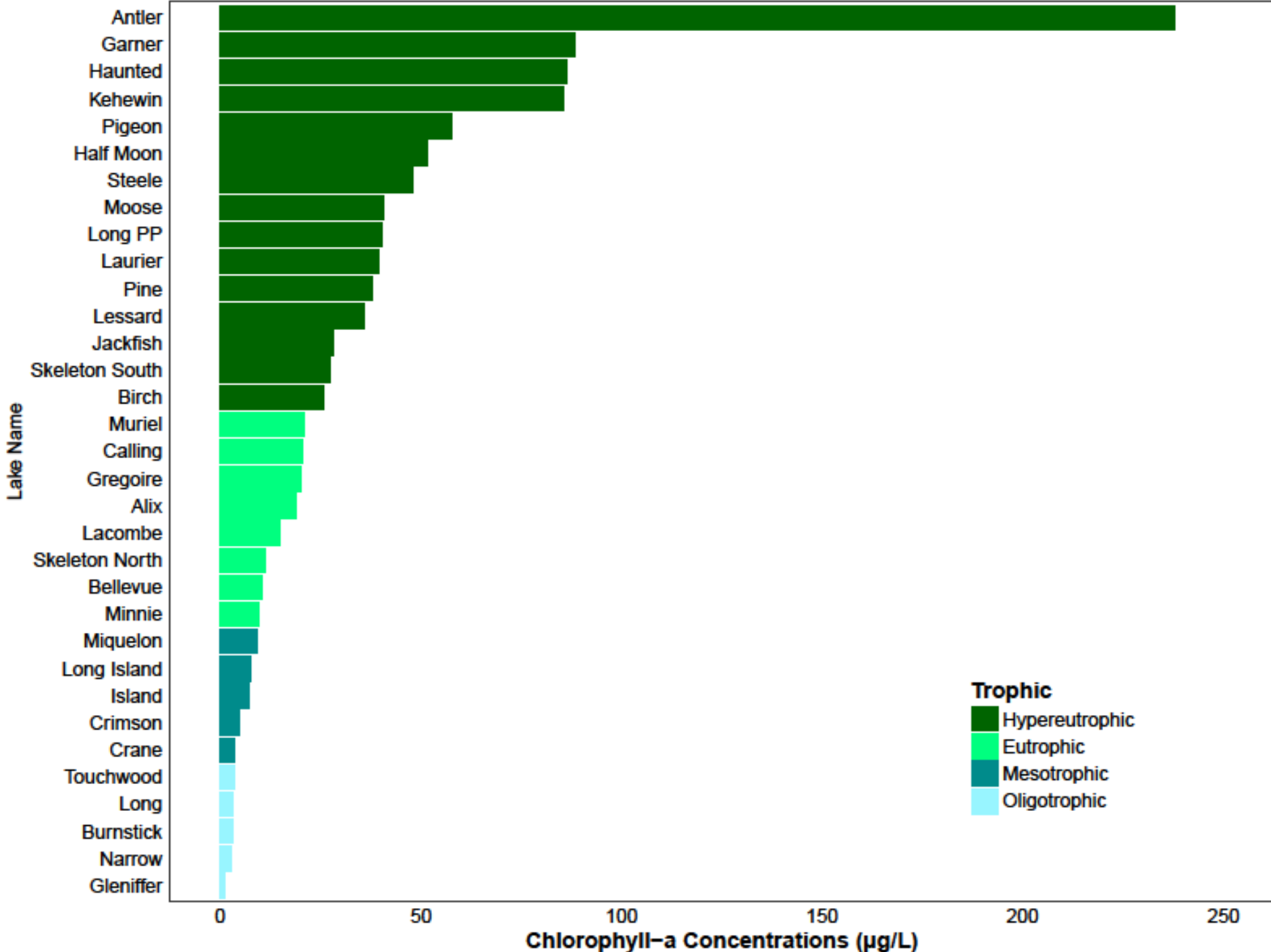
Figure 1 consists of two line graphs sharing a common x-axis representing dates from June 10 to June 20, 2017.

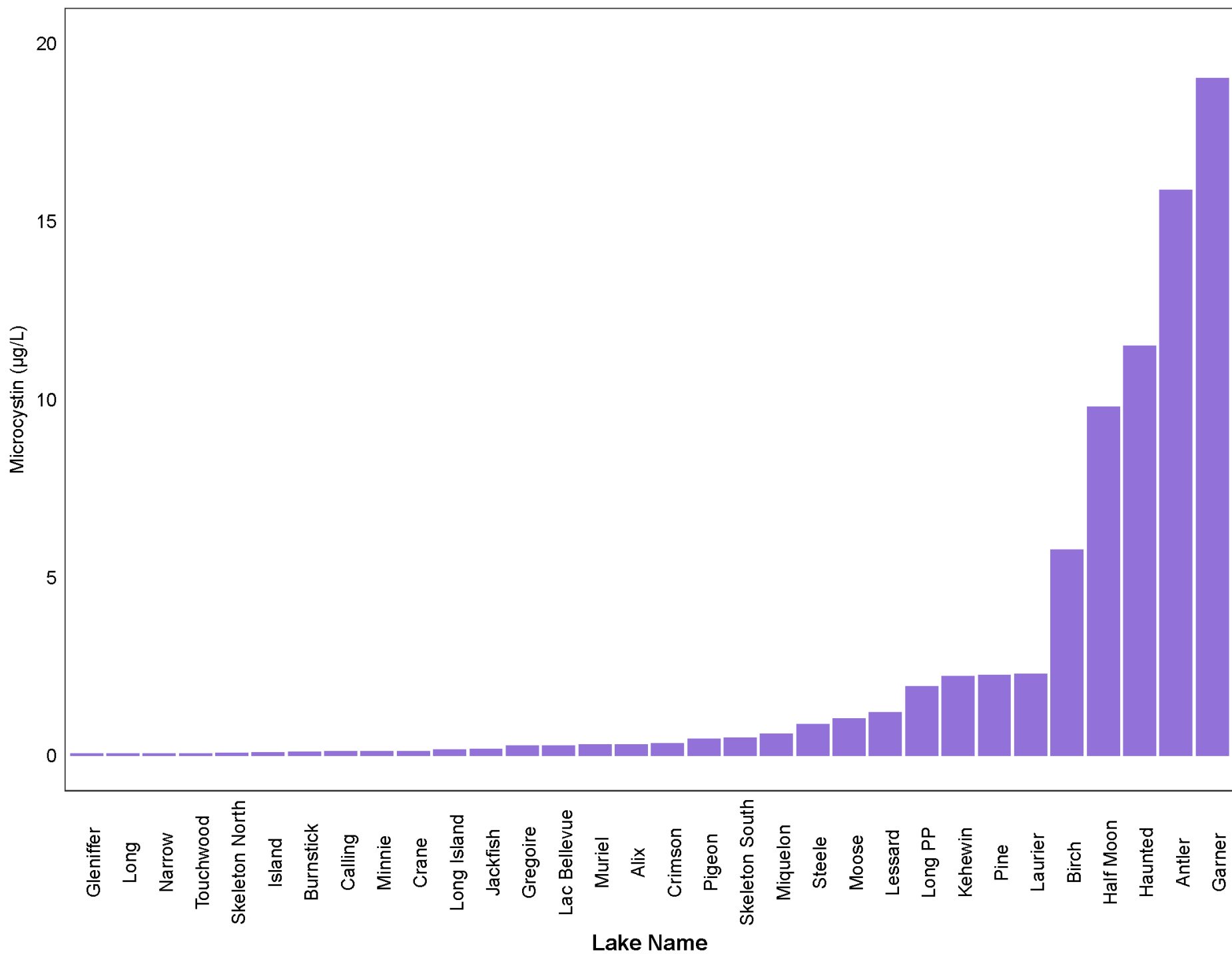
The top graph displays 'Total Phosphate and Chlorophyll a'. The y-axis ranges from 0 to 50. The legend indicates two series: 'Chlorophyll a' (blue line) and 'Phosphate' (red line). Chlorophyll a starts at approximately 45, dips slightly to 43 on June 17, and then rises to about 50 by June 20. Phosphate starts at approximately 10, rises to 15 on June 17, dips to 12 on June 18, and then rises sharply to approximately 50 by June 20.

The bottom graph displays 'TSS' (Total Suspended Solids). The y-axis ranges from 0.0 to 1.0 mg/L. The legend indicates one series: 'TSS' (green line). TSS starts at approximately 0.95 mg/L on June 10, drops to 0.4 mg/L on June 17, rises to 0.6 mg/L on June 18, drops to 0.2 mg/L on June 19, and then rises sharply to approximately 0.95 mg/L on June 20.

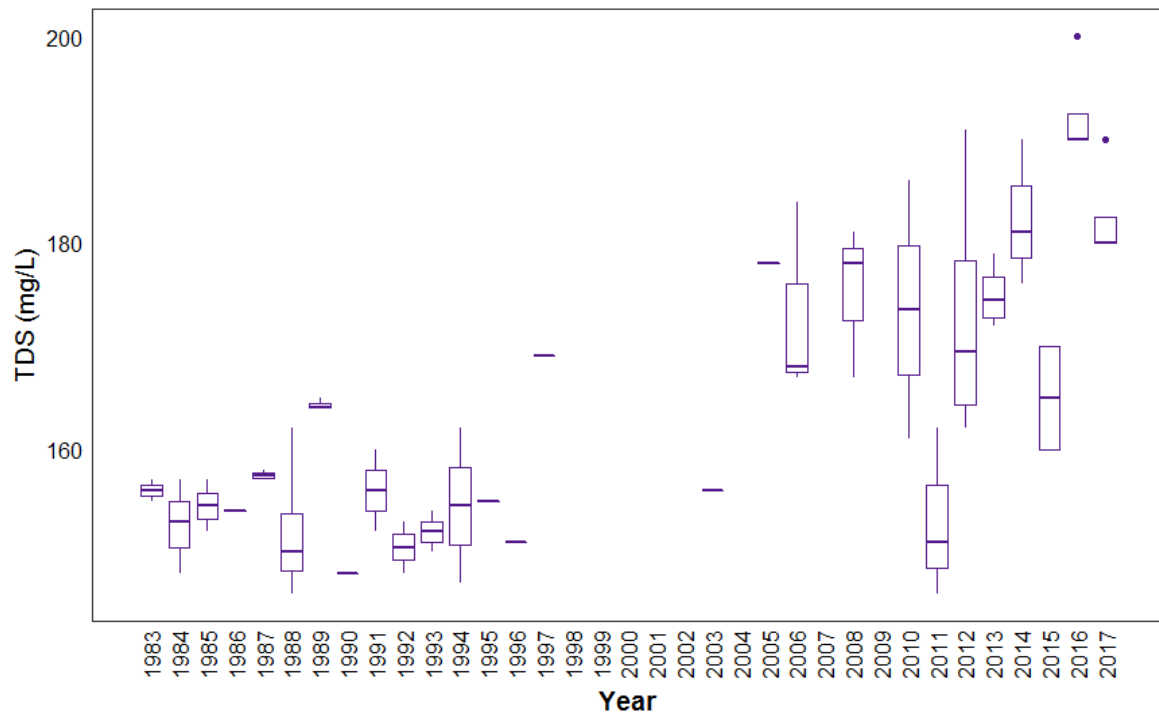
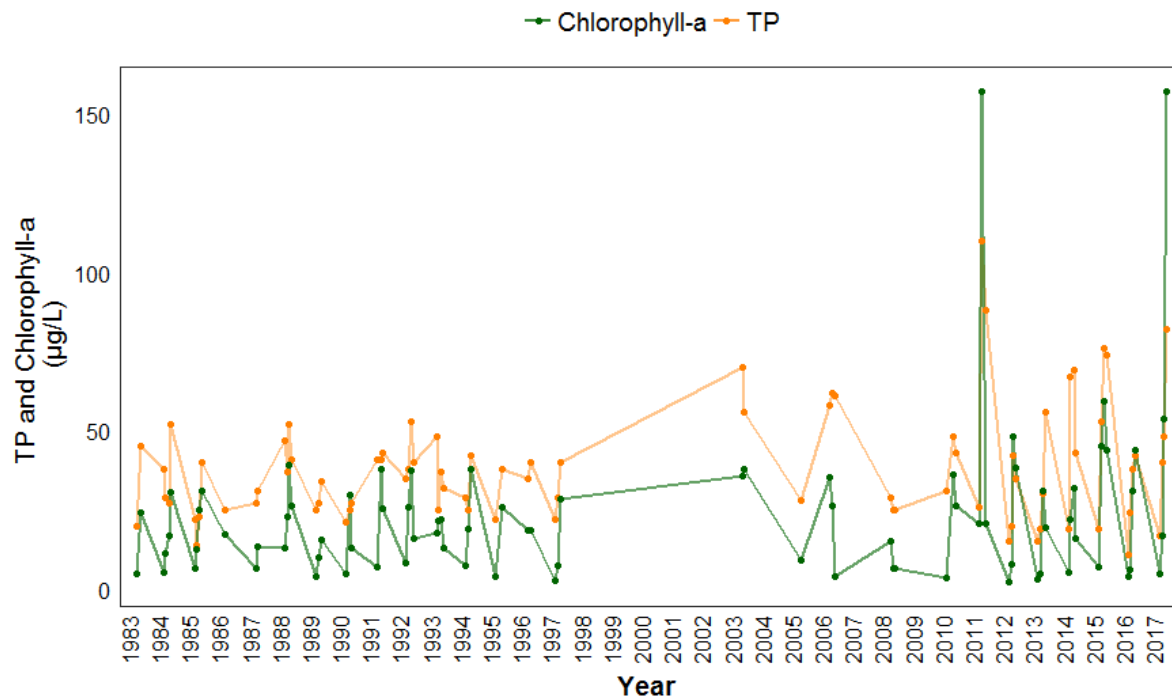
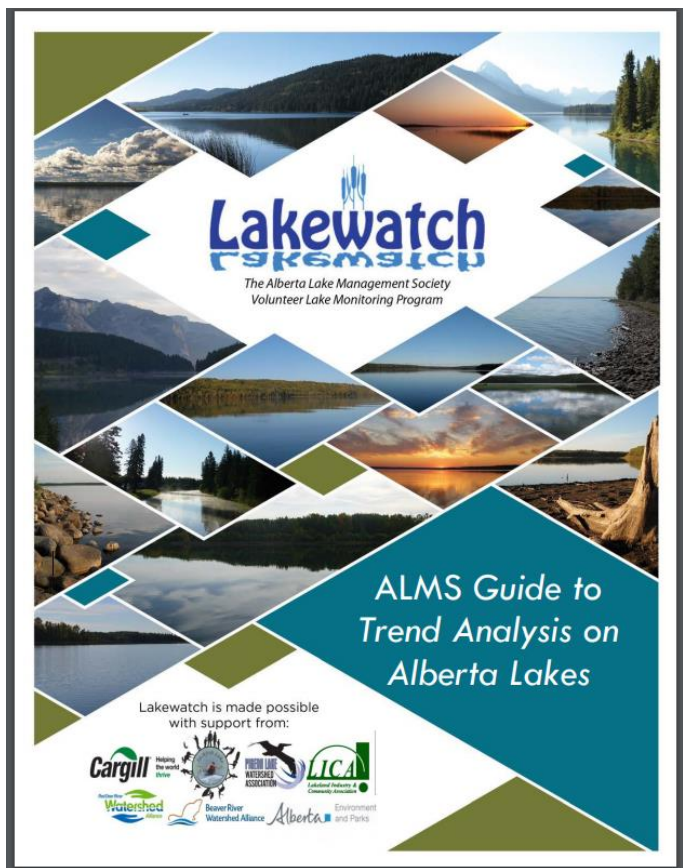
Date	Search Engines
2012	6
2013	3
2014	2
2015	1
2016	1

Water temperature and dissolved oxygen profiles in the water column can provide information on water quality and fish habitat. The depth of the thermocline is important in determining the depth at which dissolved oxygen from the surface can be mixed. Please refer to the end of this report for descriptions of technical terms.

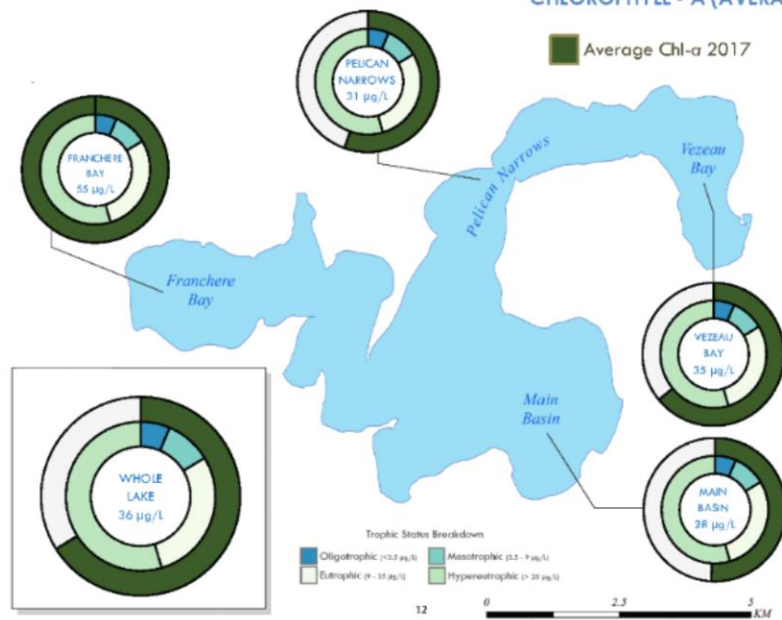




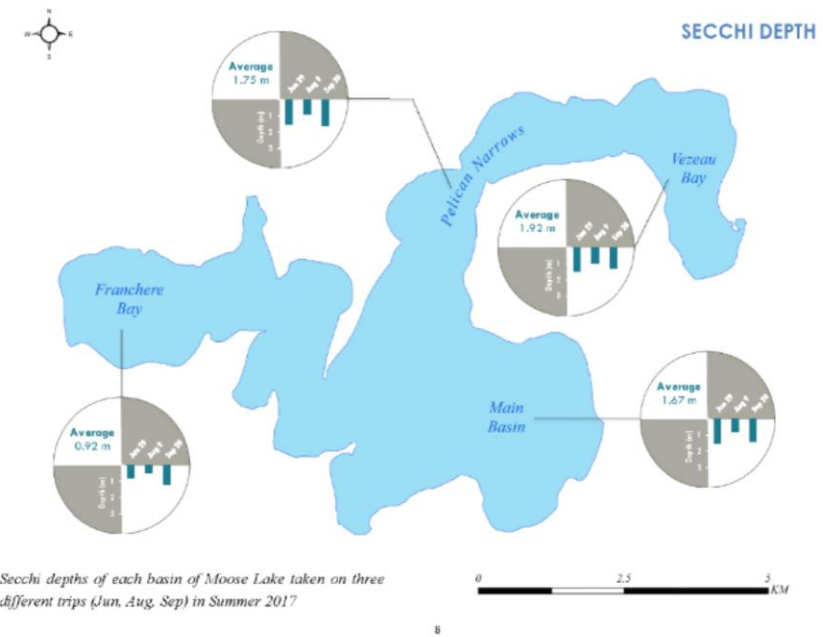




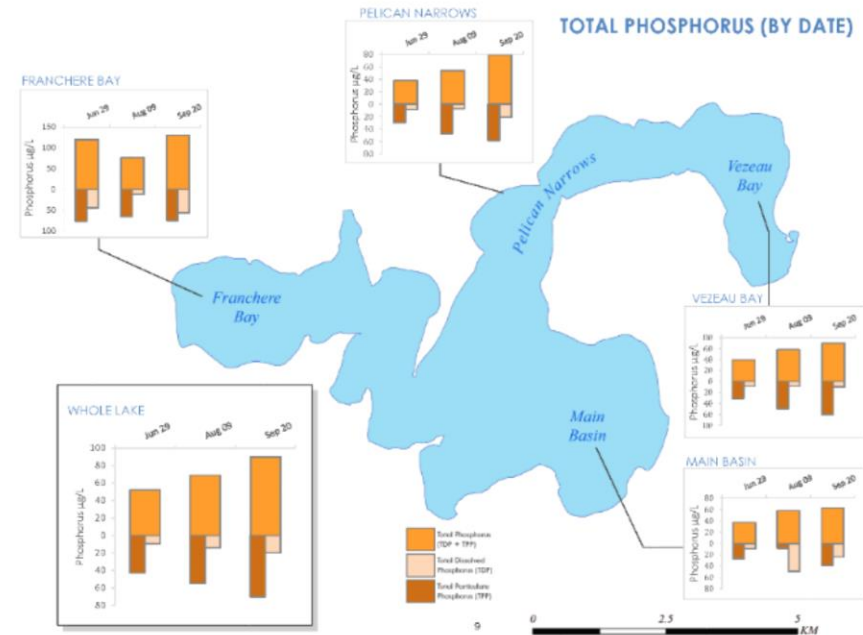
CHLOROPHYLL - A (AVERAGE)

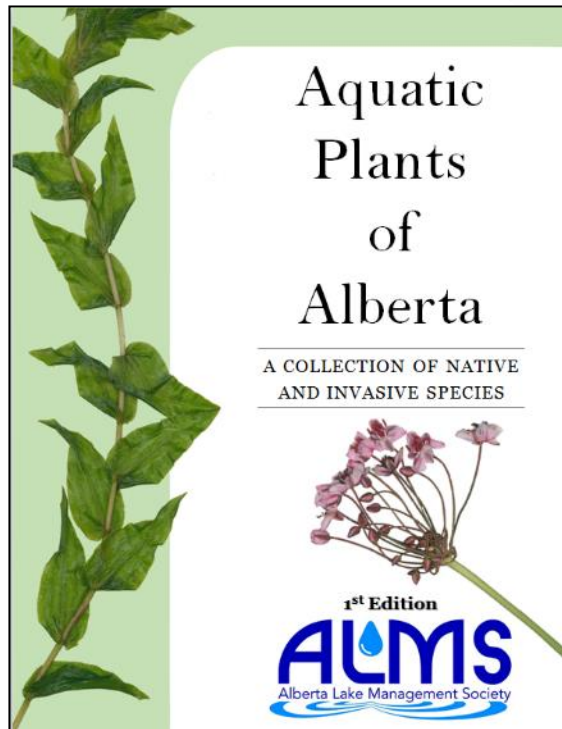
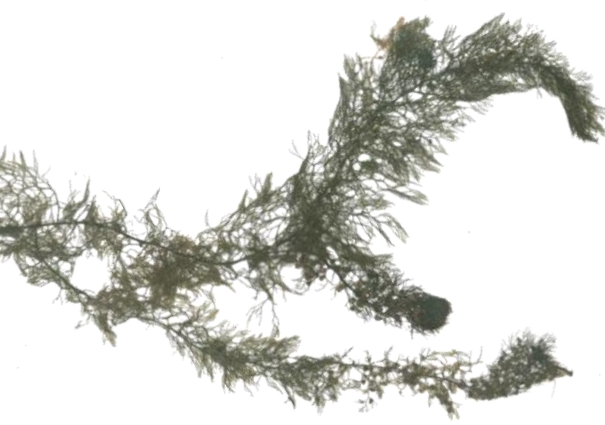


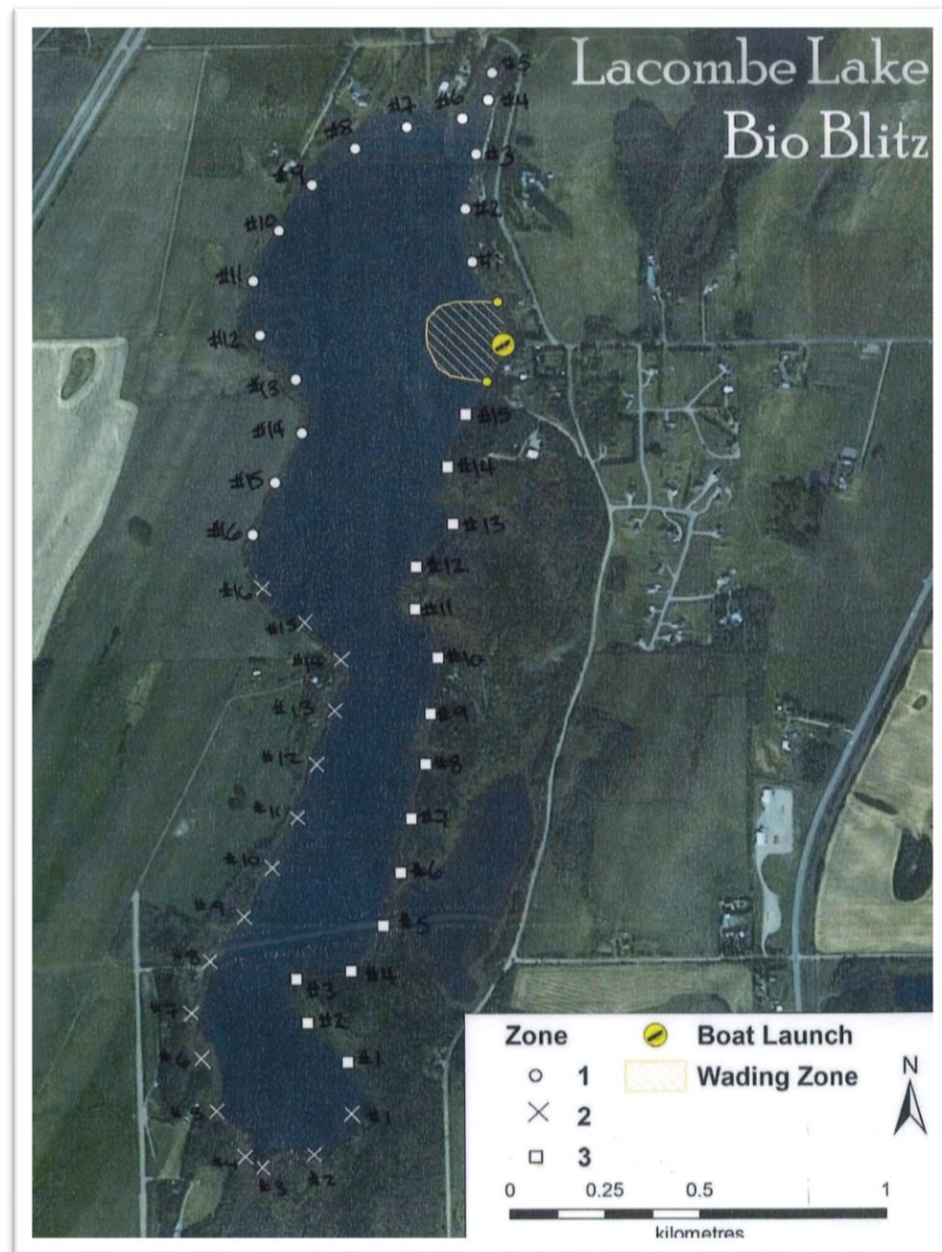
SECCHI DEPTH



REFINED STUDIES









Pondweed spp.
Possibly Sheathing Pondweed
Stuckenia vaginata



Richardson's Pondweed
Potamogeton richardsonii



Northern Milfoil
Myriophyllum sibiricum



Arrowhead
Sagittaria latifolia



Lily spp.
Nuphar spp.



Sago Pondweed
Stuckenia pectinata



Small Leaf Pondweed
Potamogeton pusillus



Bladderwort
Utricularia spp.



Spiral Ditchgrass
Ruppia cirrhosa



Variable-Leaf Watermilfoil? Northern Milfoil?



White Stem Pondweed



LakeKeepers



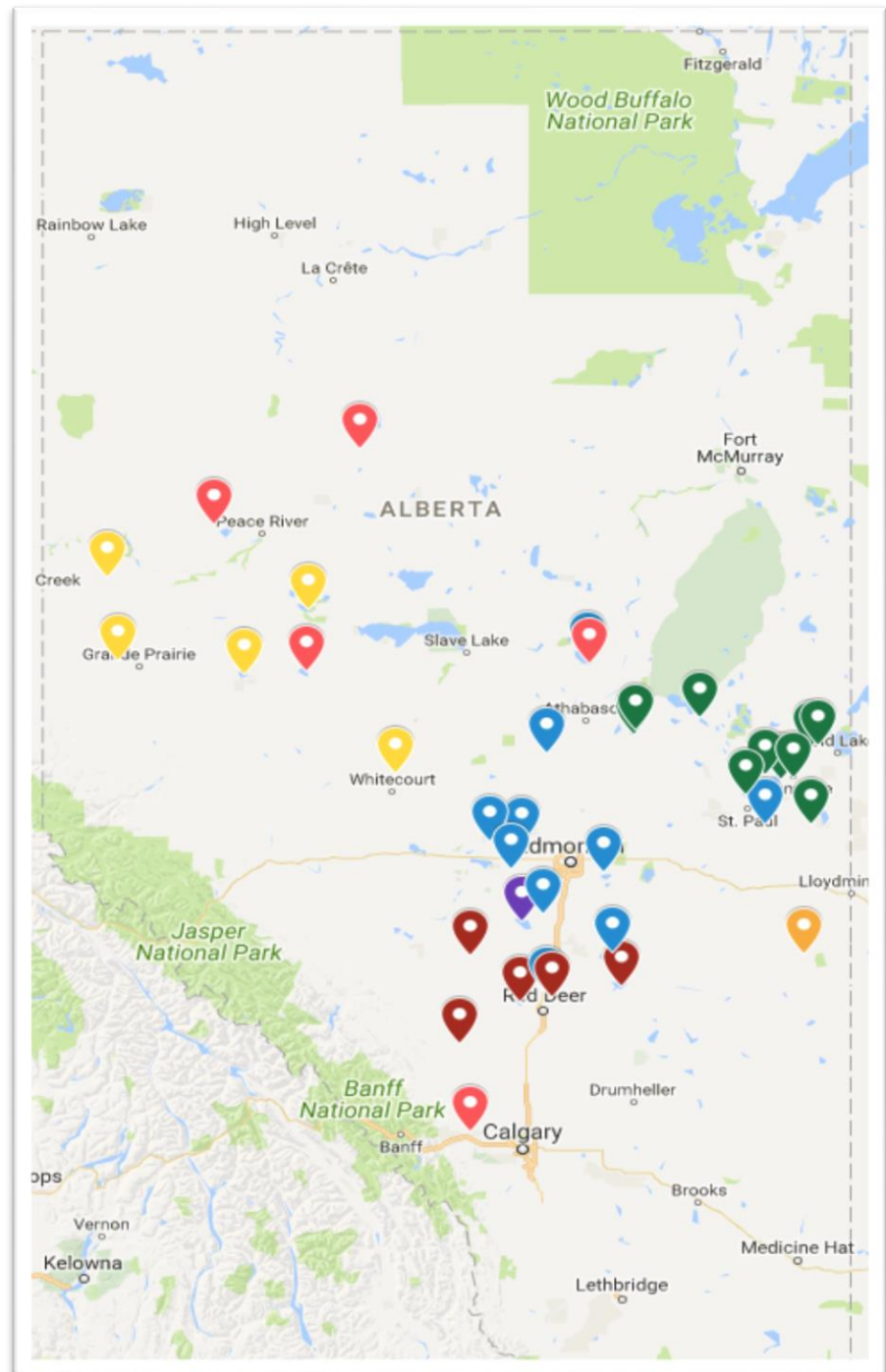
Snipe Lake - MPWA

Haig Lake - MPWA

Figure 8 Lake - MPWA

Calling Lake

Ghost Reservoir





LakeKeepers

This project supported with funding from

alberta
ecotrust



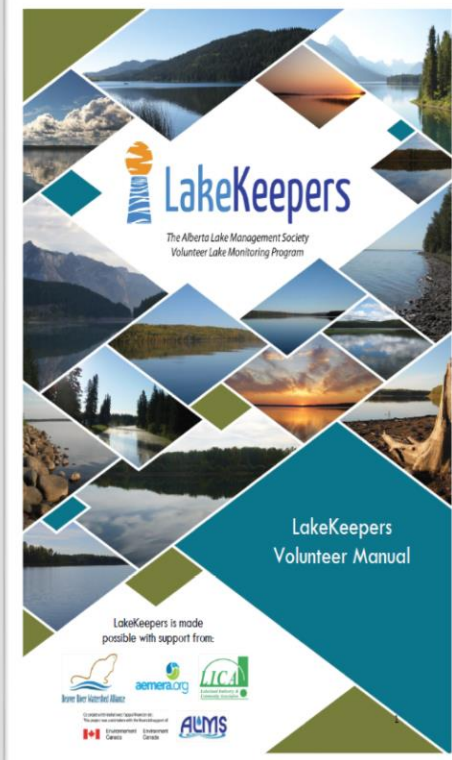
EQUIPMENT



VOLUNTEERS



LAB ANALYSIS



REPORTING



OTHER OPPORTUNITIES



- Follow us at FaceBook.com/AlbertaLakeManagement
- Sign up for a free newsletter at www.alms.ca
- Follow on Twitter @AlbertaLake

780-702-ALMS
www.alms.ca

